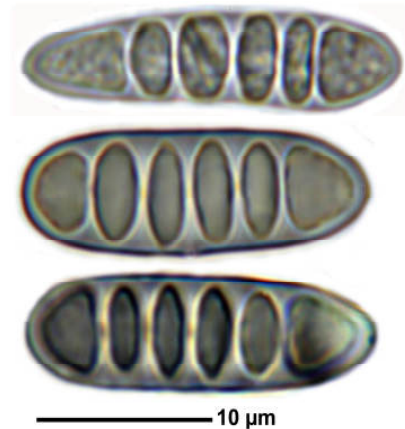


Sarcographa labyrinthica (Ach.) Müll.Arg.

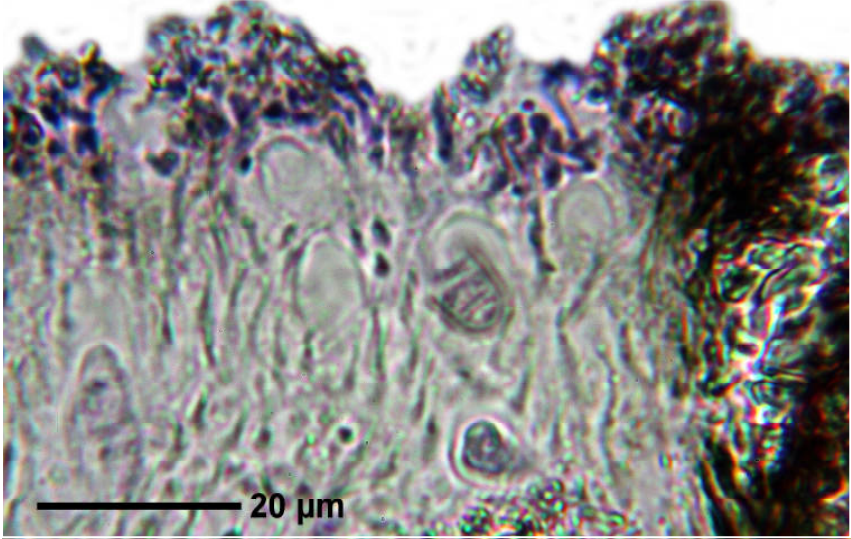
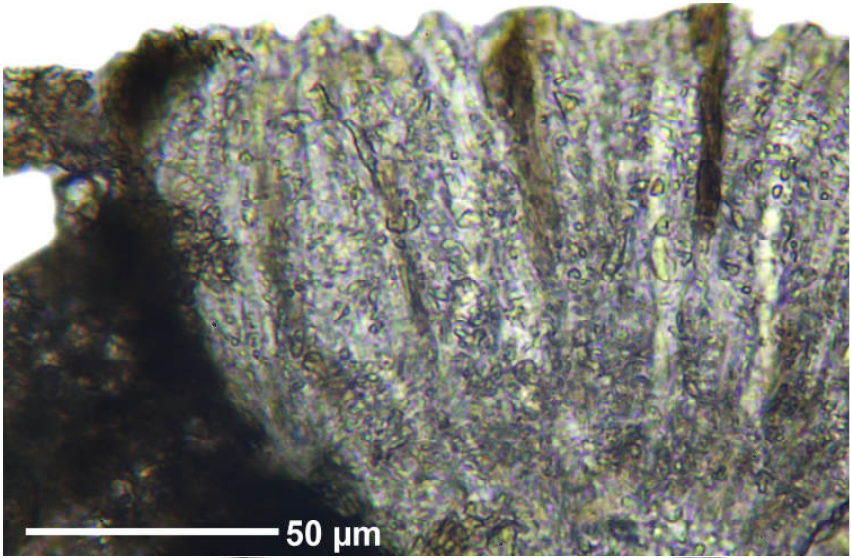
Spores brownish, 8/ascus, 3-5 septate, 14-22 x 5-7 μm , I+ redbrown but not blue. Hymenium dense inspersed, 70-90 μm high. Paraphyses densely branched. Stroma K+ yellow, KC-, P+ orange; stictic, constrictic, cryptostictic, hypostictic, substictic, peristictic acids. Pantropical.

[14588], Seychelles, Mahe, Sentier de Randonnée de Glacis-Trois Frères Nature Trail, 4°38.210' S, 55°26.7968' E, ca. 480 m. Leg. Schumm & Frahm 07.10.2008, det. Aptroot 2008.





Sarcographa labyrinthica



Sarcographa labyrinthica