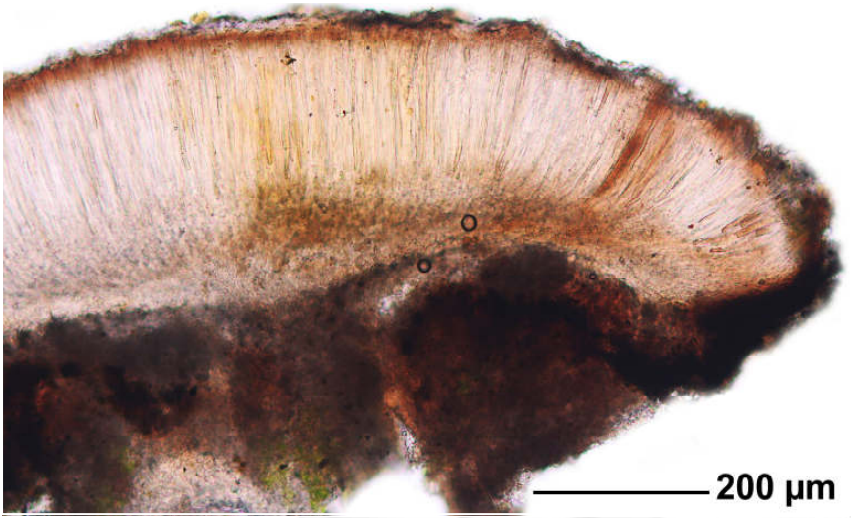




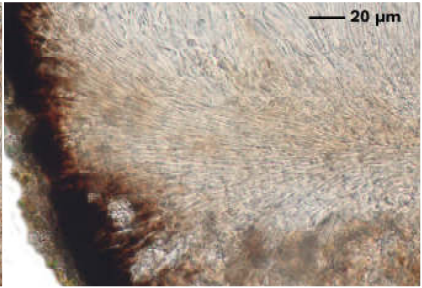
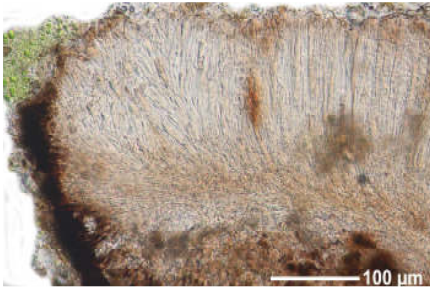
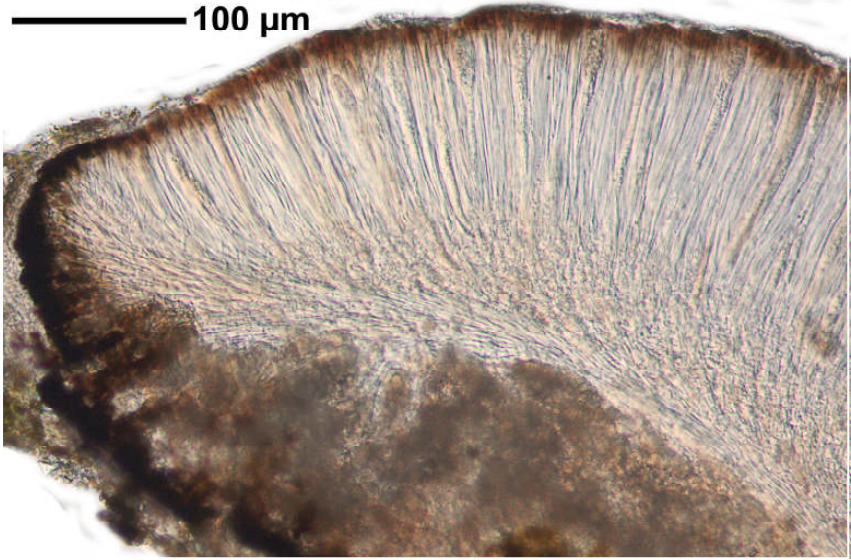
*Sarcogyne privigna* (Ach.) A.Massal.

Sporen zu ca. 100, hyalin, 1-zellig, farblos, ca. 5 x 2  $\mu\text{m}$ . Paraphysen unverzweigt. Hypothecium hell. Excipulum außen kohligh braunschwarz.

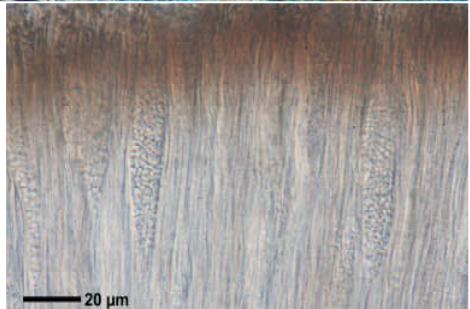
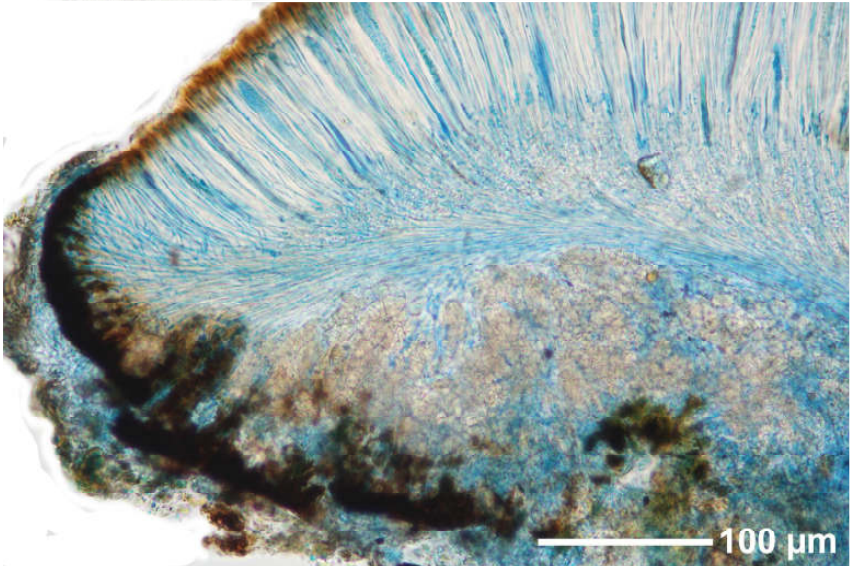
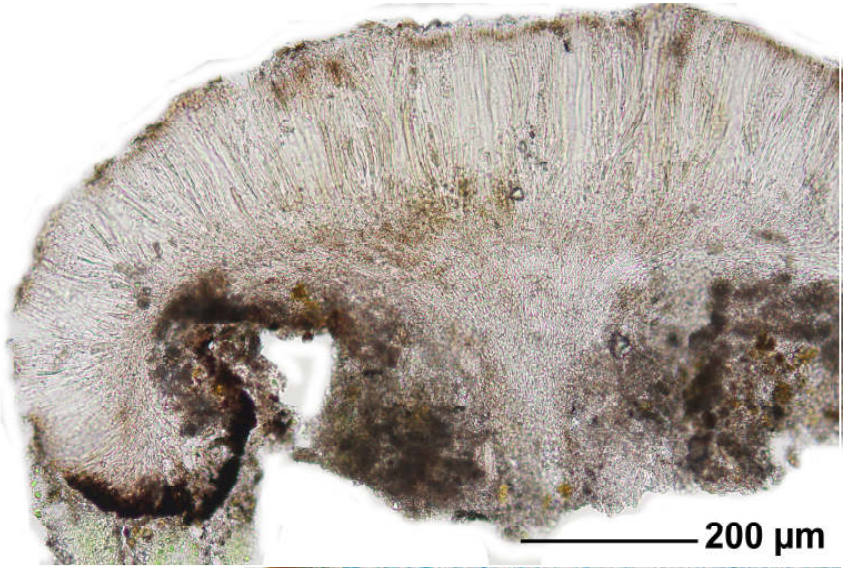
[16695], Germany, Baden-Württemberg, Kreis Ludwigsburg, 1.2 km NO von Besigheim, an der Besigheimer Str. auf kalkhaltigem Sandstein, 49.00764° N, 9.15640° E, 185 m. Leg. et det. Schumm 03.10.2010.



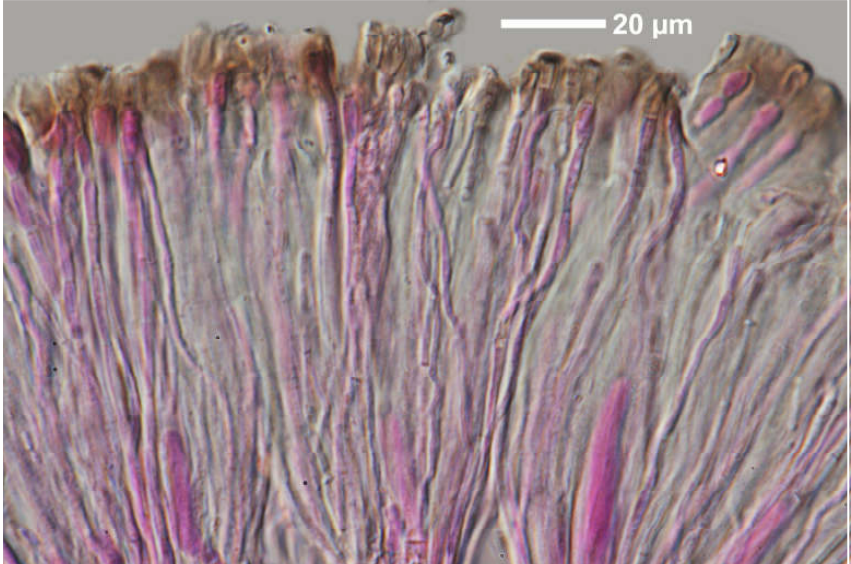
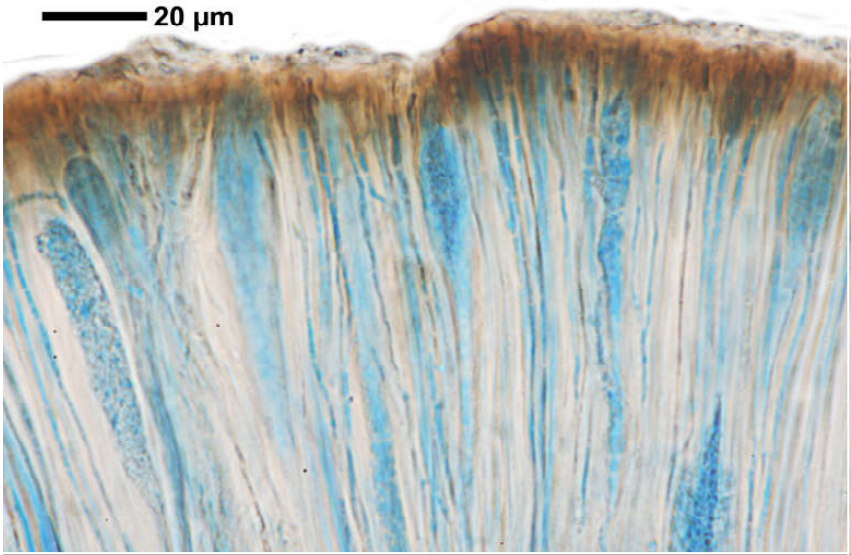
100  $\mu\text{m}$



*Sarcogyne privigna*



*Sarcogyne privigna*



*Sarcogyne privigna*