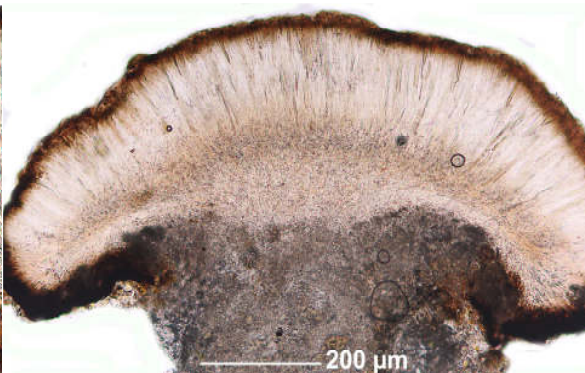
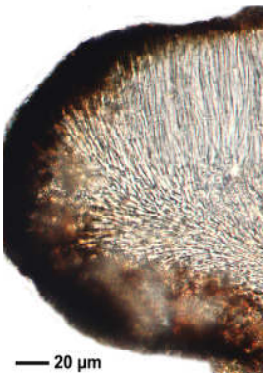
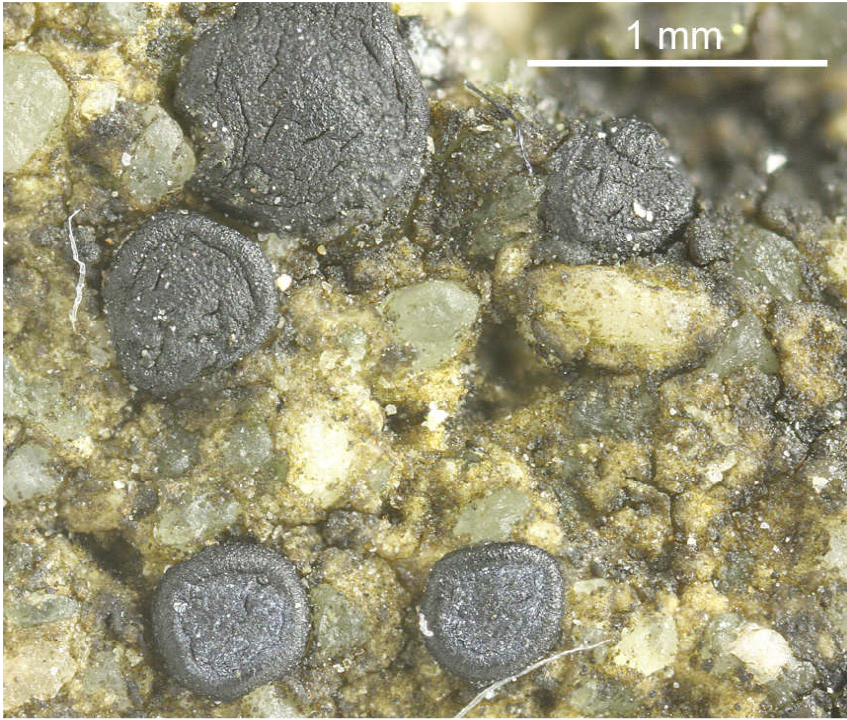
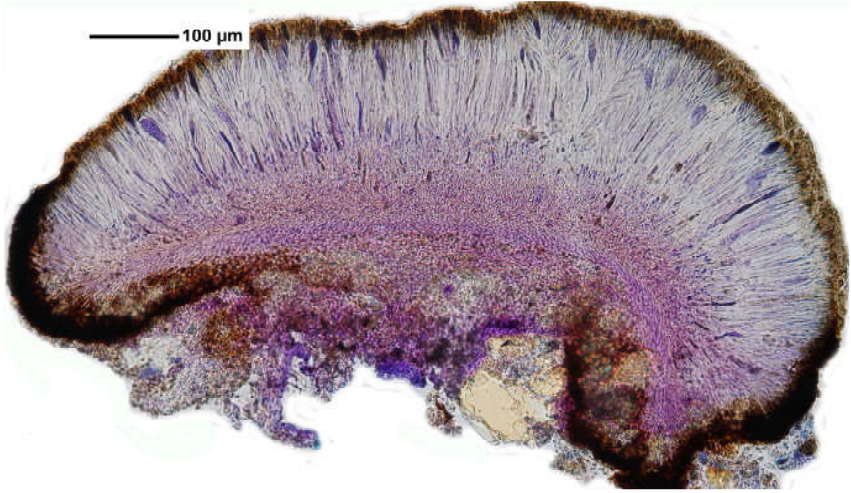
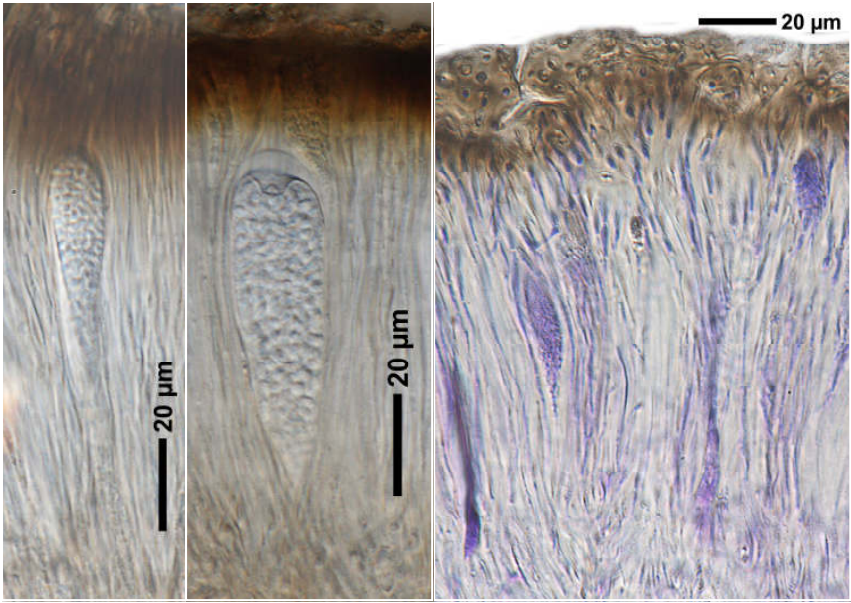


Sarcogyne regularis Körber

Sporen hyalin, 1-zellig, zu vielen/Ascus, 5,3-6,4 x 2,1-2,9 μm . Abgebildet ist eine unbereifte, feucht schwarz bleibende Form.

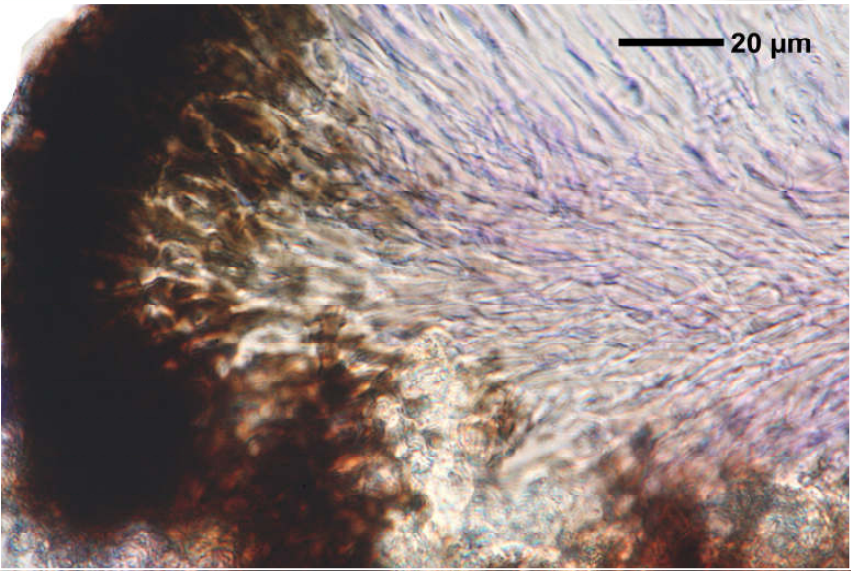
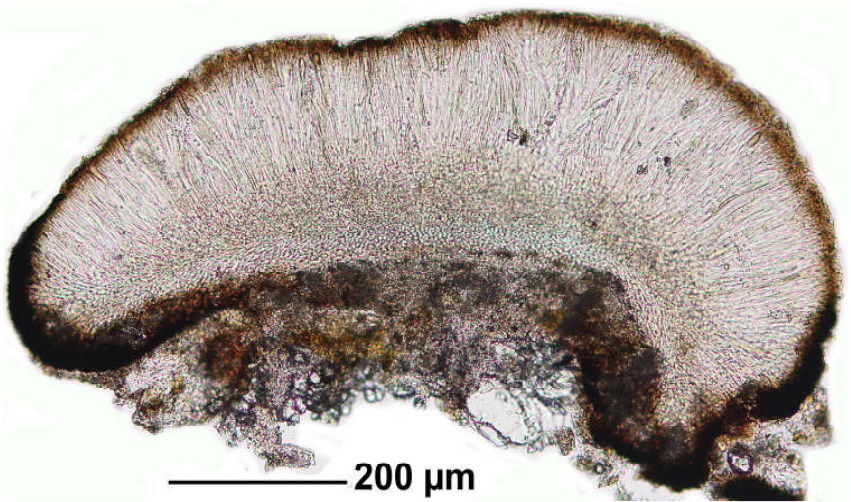
[16496], Germany, Baden-Württemberg, Rems-Murr-Kreis, Stetten/Rems, Haldenbachtal, an kalkhaltigem Sandsteinfelsen, 48,77637° N, 9,33998° E, 311 m. Leg. et det. Schumm 17.05.2010, test. A.Aptroot 2011.





10 µm

Sarcogyne regularis



Sarcogyne regularis