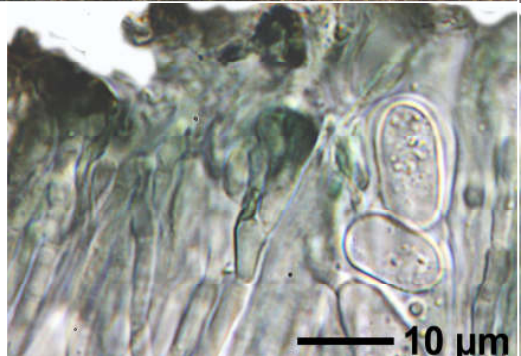
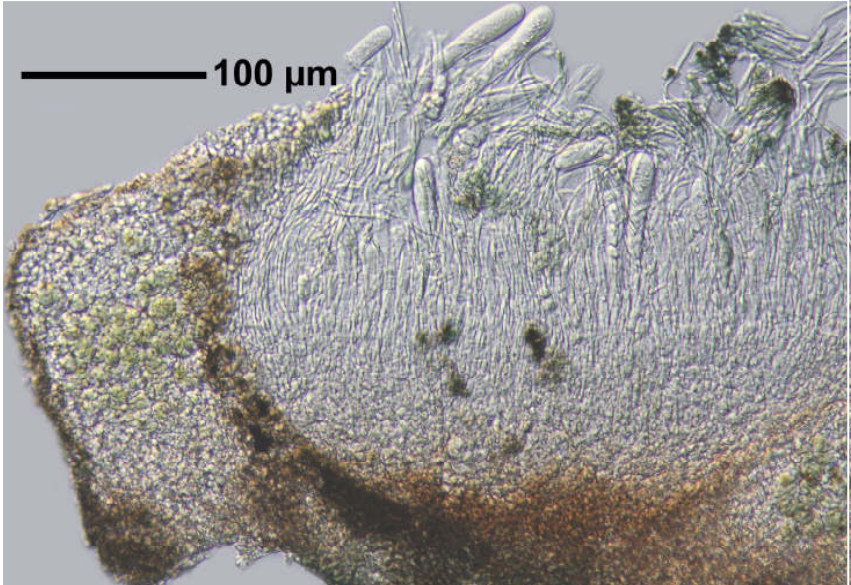
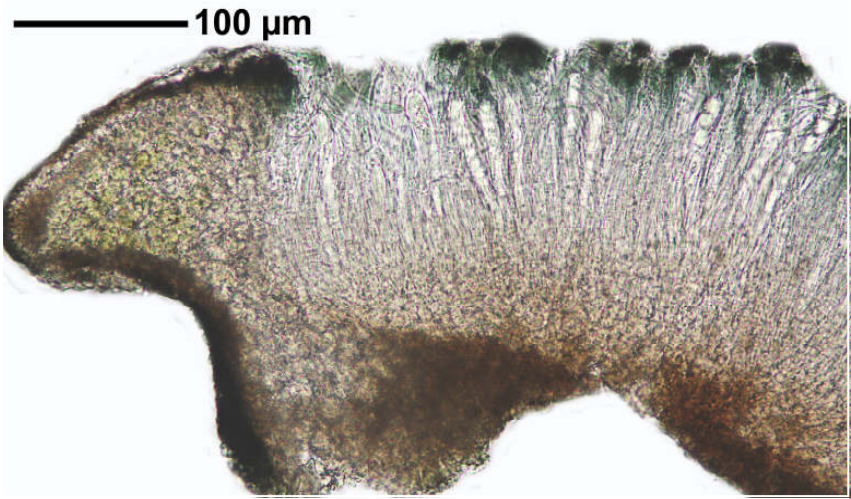


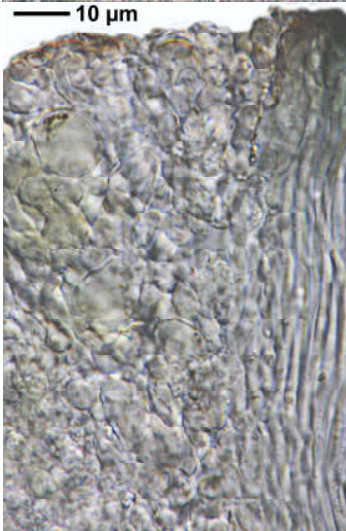
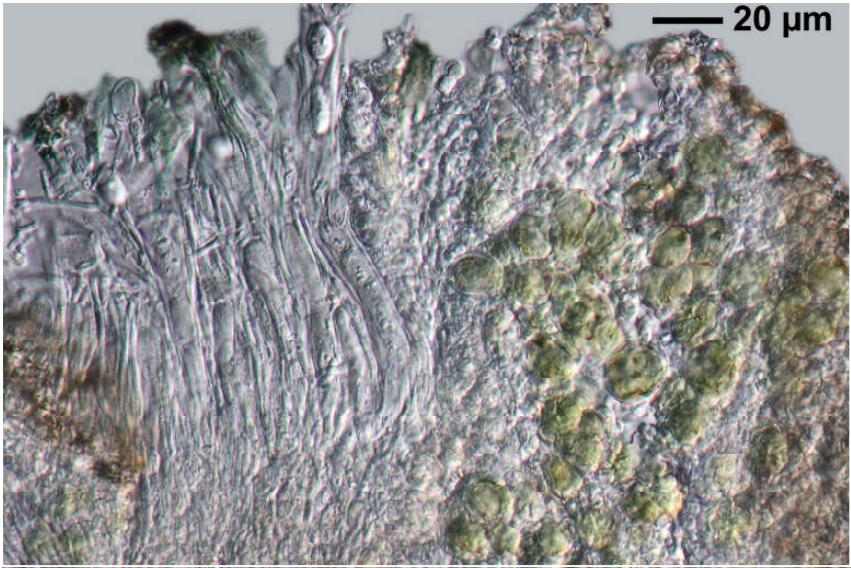
Schaereria fuscocinerea (Nyl.) Clauz. & Roux
 [= *Schaereria tenebrosa* (Flotow) Hertel & Poelt]
 [= *Lecidea tenebrosa* Flotow]

Thallus grau bis bräunlichgrau, areoliert. Apothecien schwarz, eingesenkt, Aspicilia-artig. Paraphysen sehr locker, nur an den Enden verzweigt und verwachsen. Epithecium dunkelgrün. Eigenrand fast nicht entwickelt. Hypothecium hell nach unten bräunlich. Asci schmal, fast zylindrisch, ohne Tholus, nur die Ascuswand mit J+ blau. Sporen hyalin, 1-zellig, 8/Ascus, ca. 12-15 x 7-8 µm. Chemie: Mark C+ rot, Gyrophorsäure.

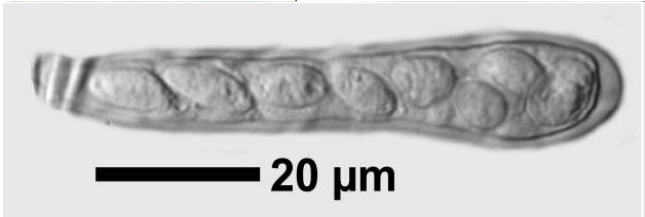
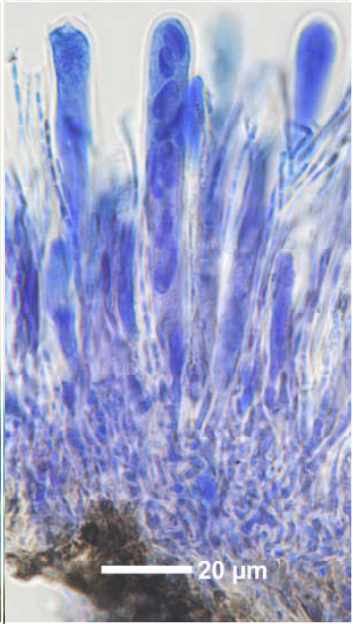
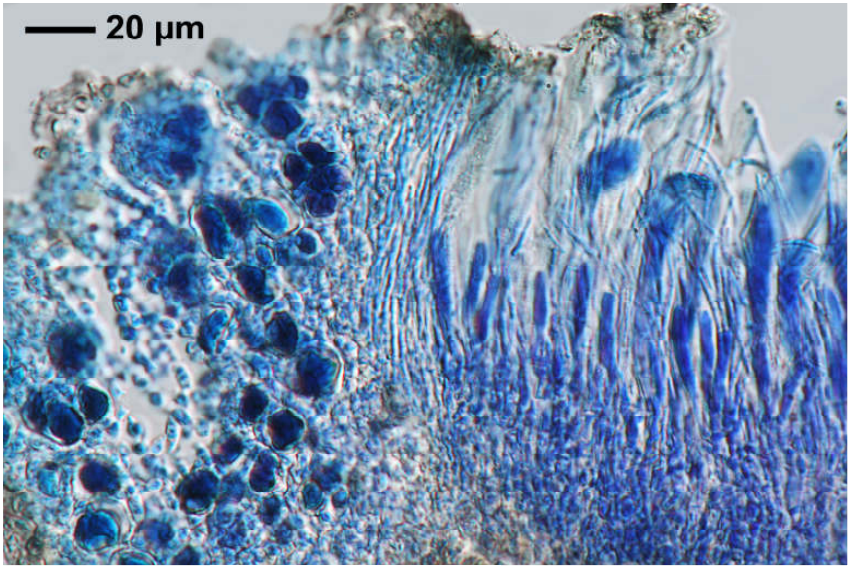
[1983], Germany, Baden-Württemberg, Südschwarzwald, Altglashütten, an Graniotblöcken beim Turnerheim, ca. 1100 m. Leg. Schumm 09.09.1971, det. V. Wirth.



Schaereria fuscocinerea



Schaereria fuscocinerea



Schaereria fuscocinerea