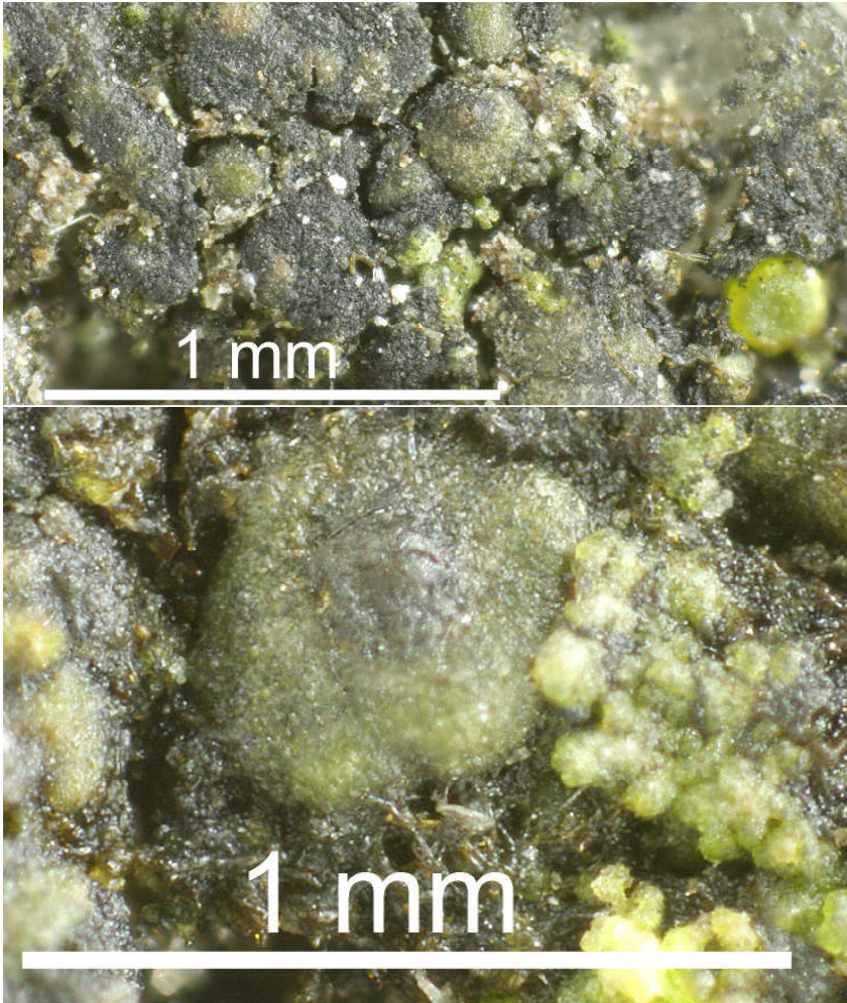
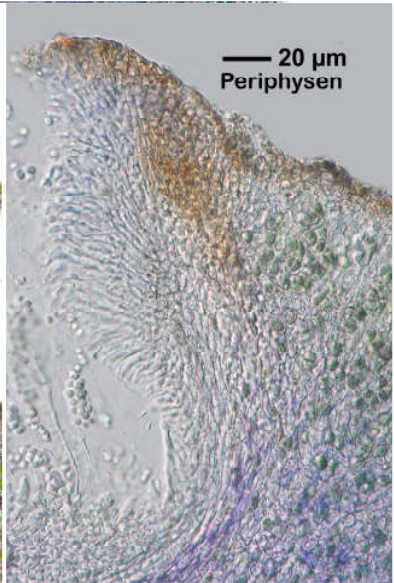
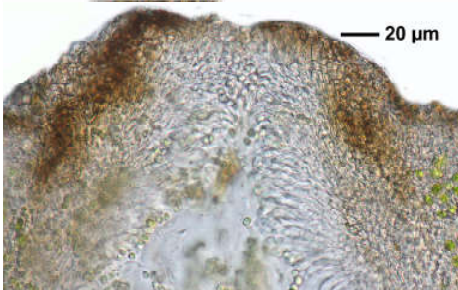
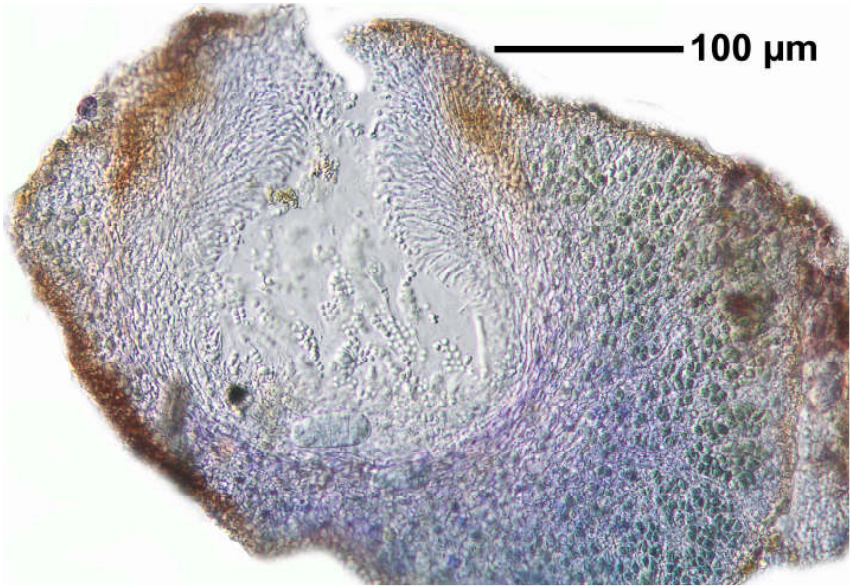


Staurothele frustulenta Vain.

Thallus aus braungrauen gewölbten Areolen, durchgängig paraplectenchymatisch, Zellen 5-7 μm . Thallusalgen hellgrün, kugelig, 6-7 μm . Peritheccien fast eingesenkt, am Scheitel braun bis braunschwarz. Excipulum farblos. Periphysen mächtig entwickelt, Paraphysen sehr dünn, verzweigt, zuletzt verschwindend. Mit Hymenialalgen, grün, kugelig, 3,3 μm . Sporen grau, muriform, 38-50 x 15-18 μm .

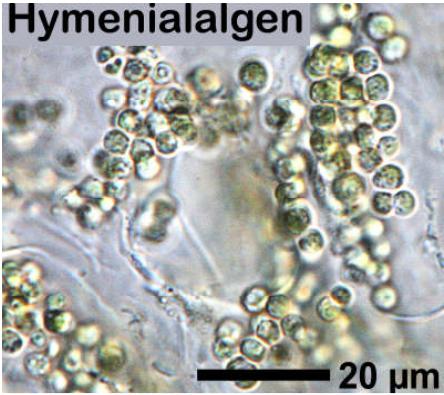
[16494], Germany, Baden-Württemberg, Rems-Muss-Kreis, Stetten/Rems, Haldenbachtal, an kalkhaltigem Sandsteinblock, 48,77637° N, 9,33998° E, 311 m. Leg. et det. Schumm 17.05.2010.



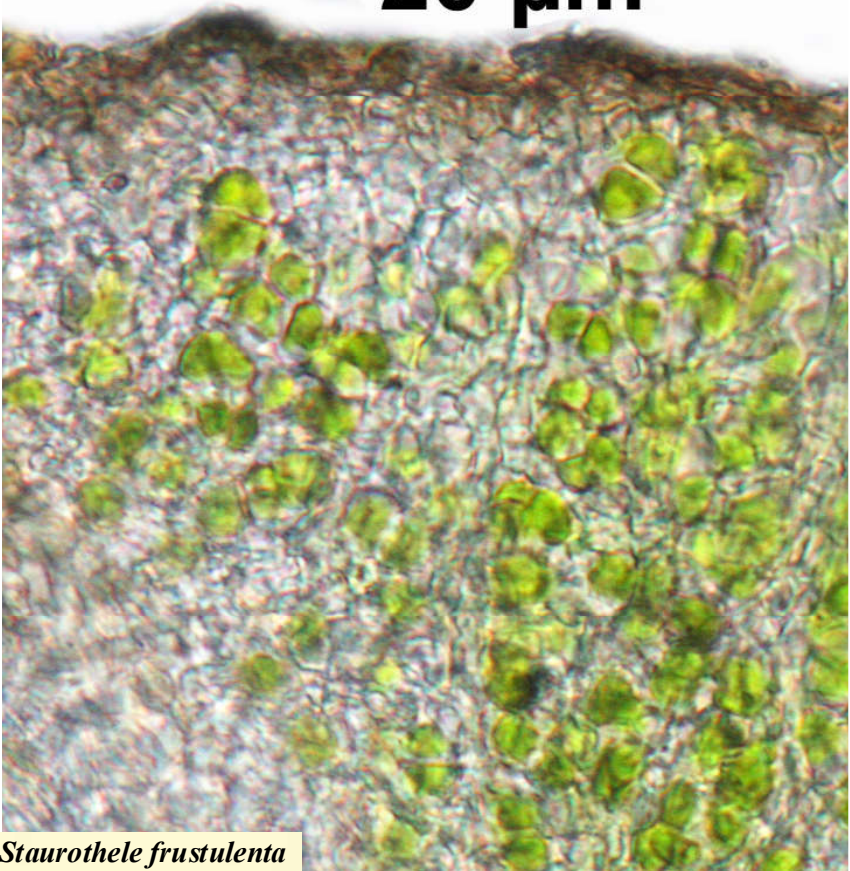


Staurothele frustulenta

Hymenialalgen



Thallusalgen
— 20 μm



Staurothele frustulenta