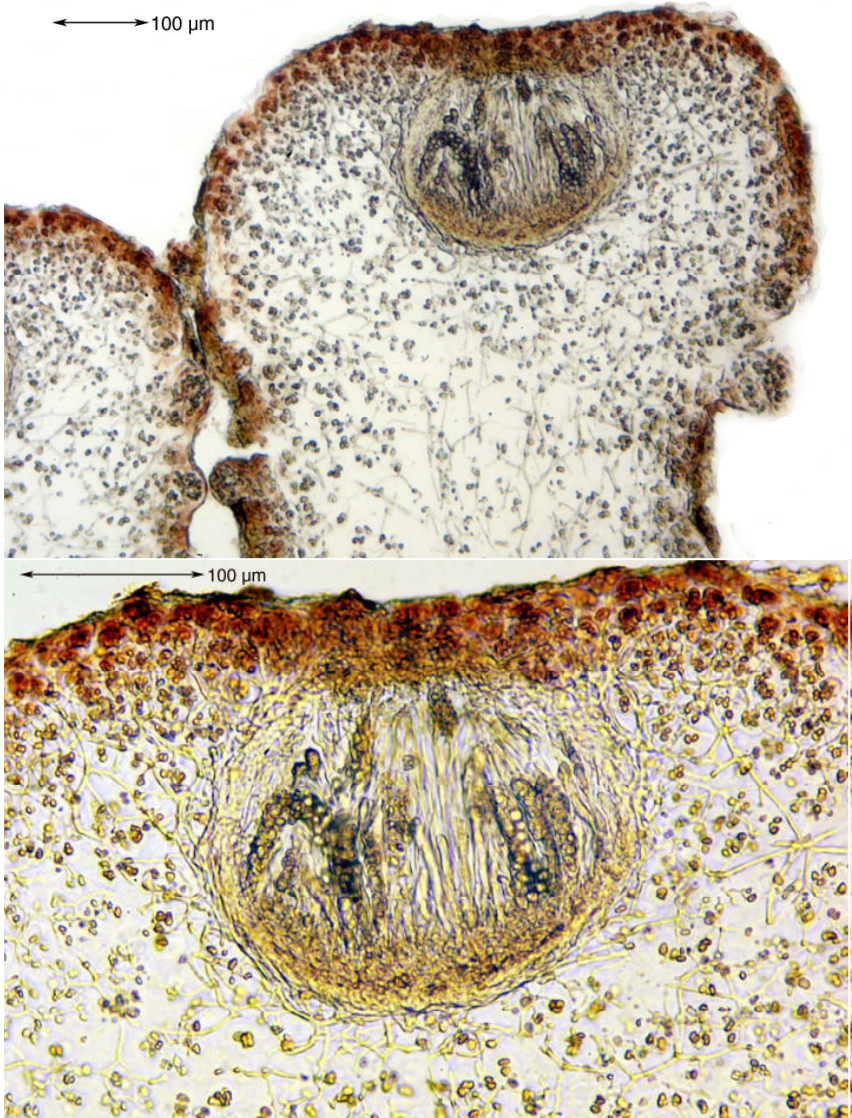
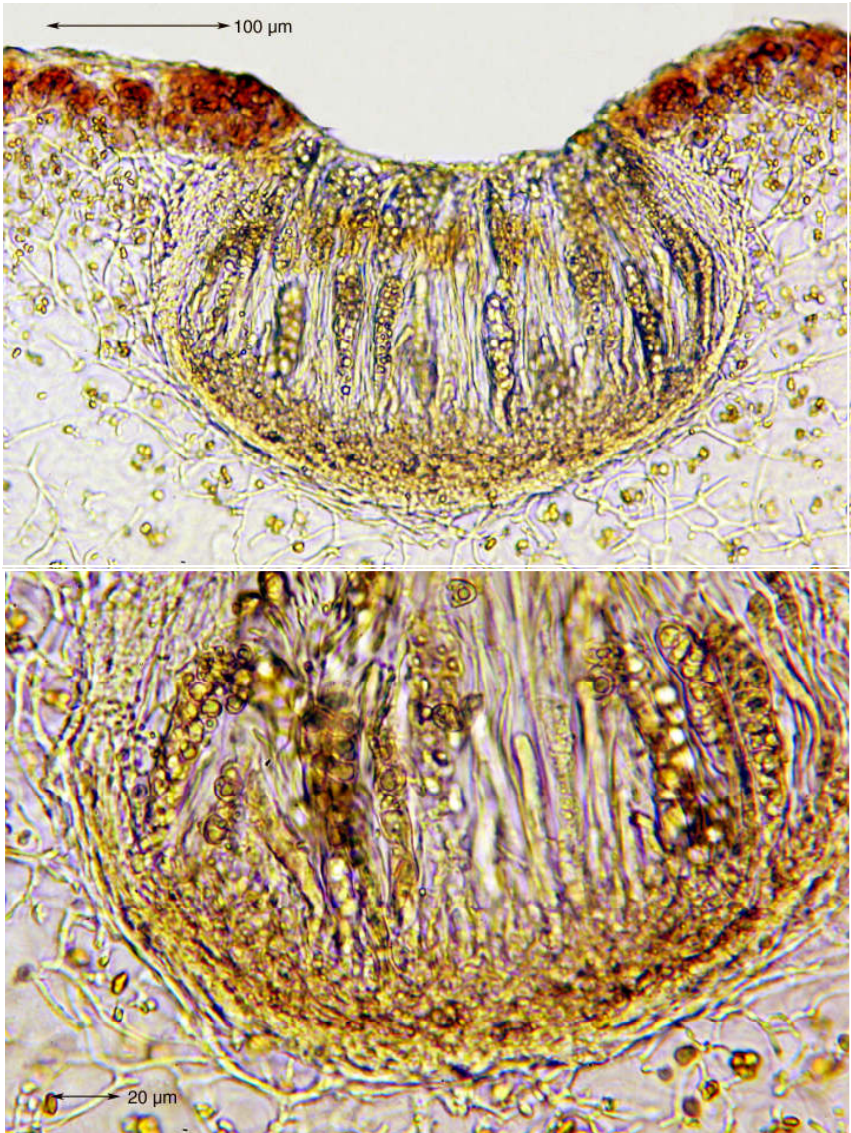


*Synalissa symphorea* (Ach.) Nyl.

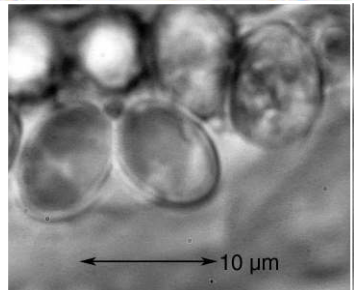
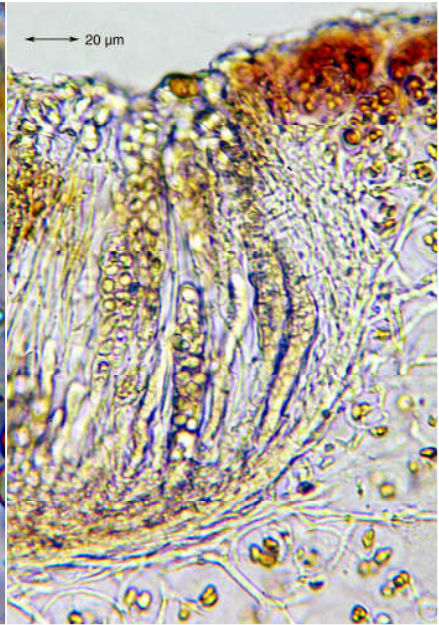
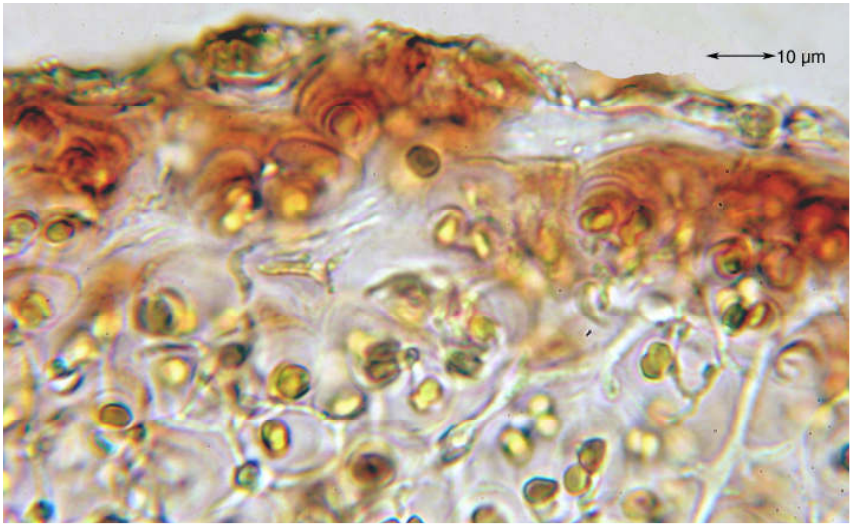
Sporen hyalin, 1-zellig, kugelig, ca. 16/Ascus, 9.8 x 7.6 µm. Hymenium hell, ca. 167 µm, Hypothecium bräunlich, ca. 50 µm

[13242], Germany, Kreis Göppingen, Hohenstaufen, auf Kalkblöcken bei der Spielburg, 570 m. Leg. et det. Schumm 06.07.2007.





*Synalissa symphorea*



*Synalissa symphorea*