

*Teloschistes chrysophthalmus* (L.) Th.Fr.

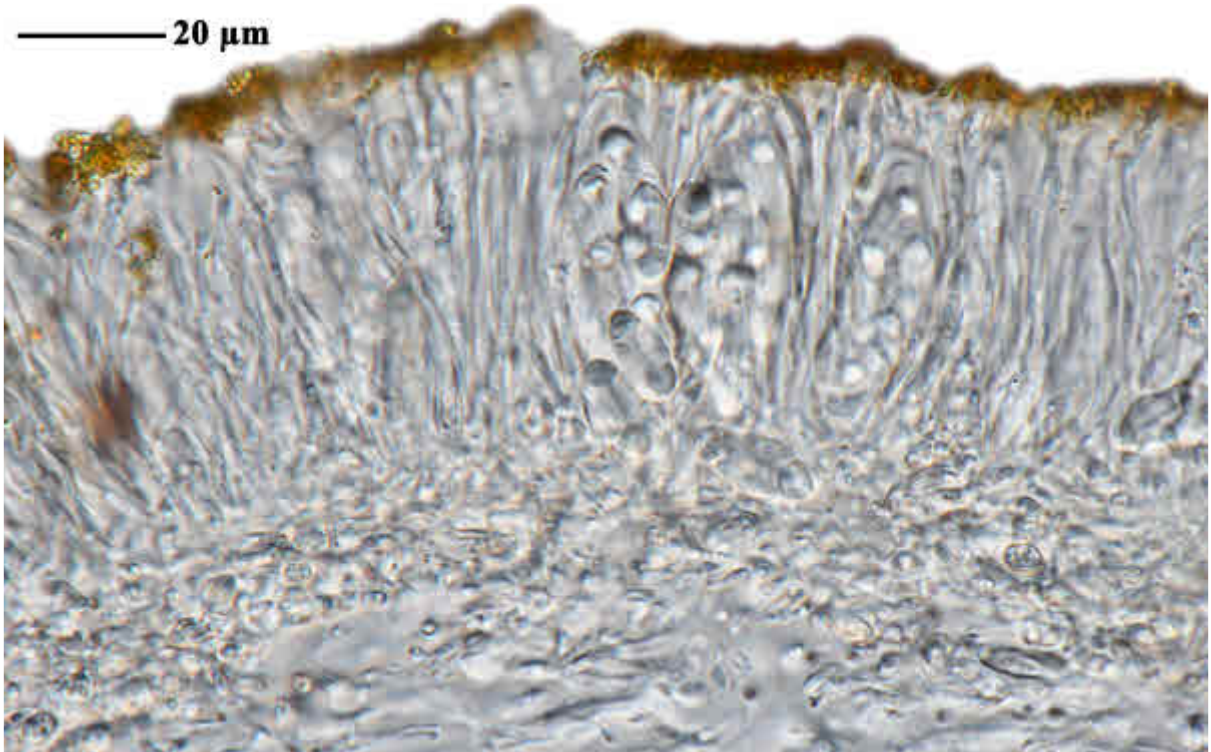
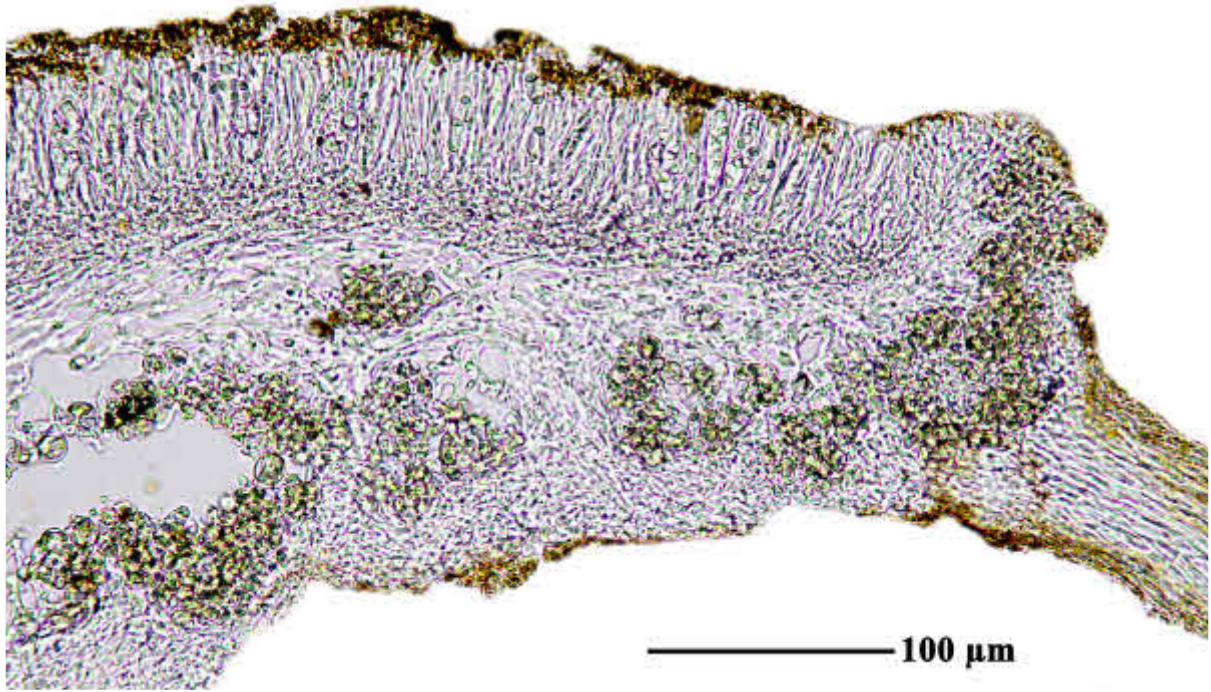
Thallus yellowish orange to gray, forming globular tufts, 1-3 cm broad; lobes 0.5-3 mm wide, with numerous cilia, radiating from a holdfast. Apothecia numerous, orange, sessile or stalked, mostly terminal, with numerous marginal cilia. Ascospores hyaline, 10-15 x 5-8  $\mu\text{m}$ , polaridiblastic, 8/ascus.

[19279], Australia, South Australia, Kangaroo Island, King George Beach, 35°40' S, 137°04' E, 2 m, growing on dead *Epacris* along the foreshore. Leg. J.A. Elix (19757) & L.H. Elix, 30.10.1985. Chemistry: parietin (major), teloschistin, fallacinal, parietinic acid by HPLC, anal. G.A. Jenkins. LICHENS AUSTRALASICI EXSICCATI NO. 124.

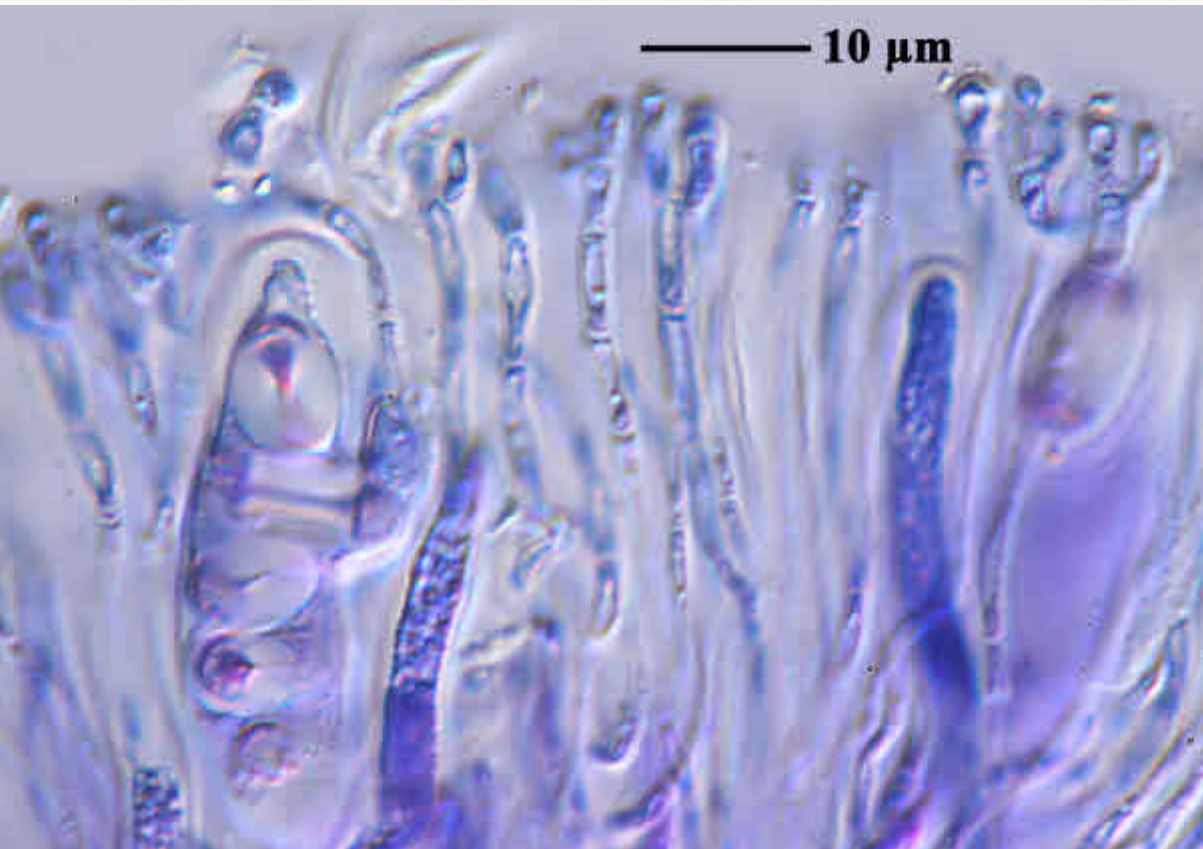
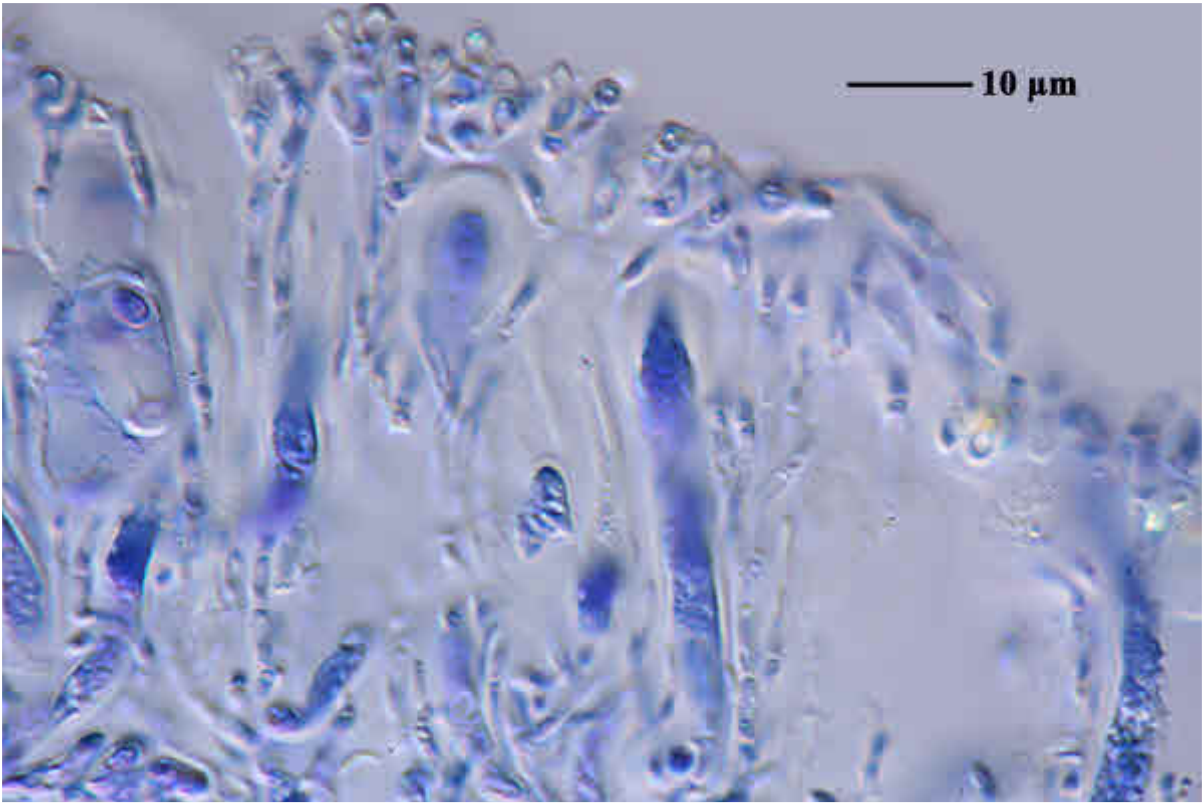




*Teloschistes chrysophthalmus*

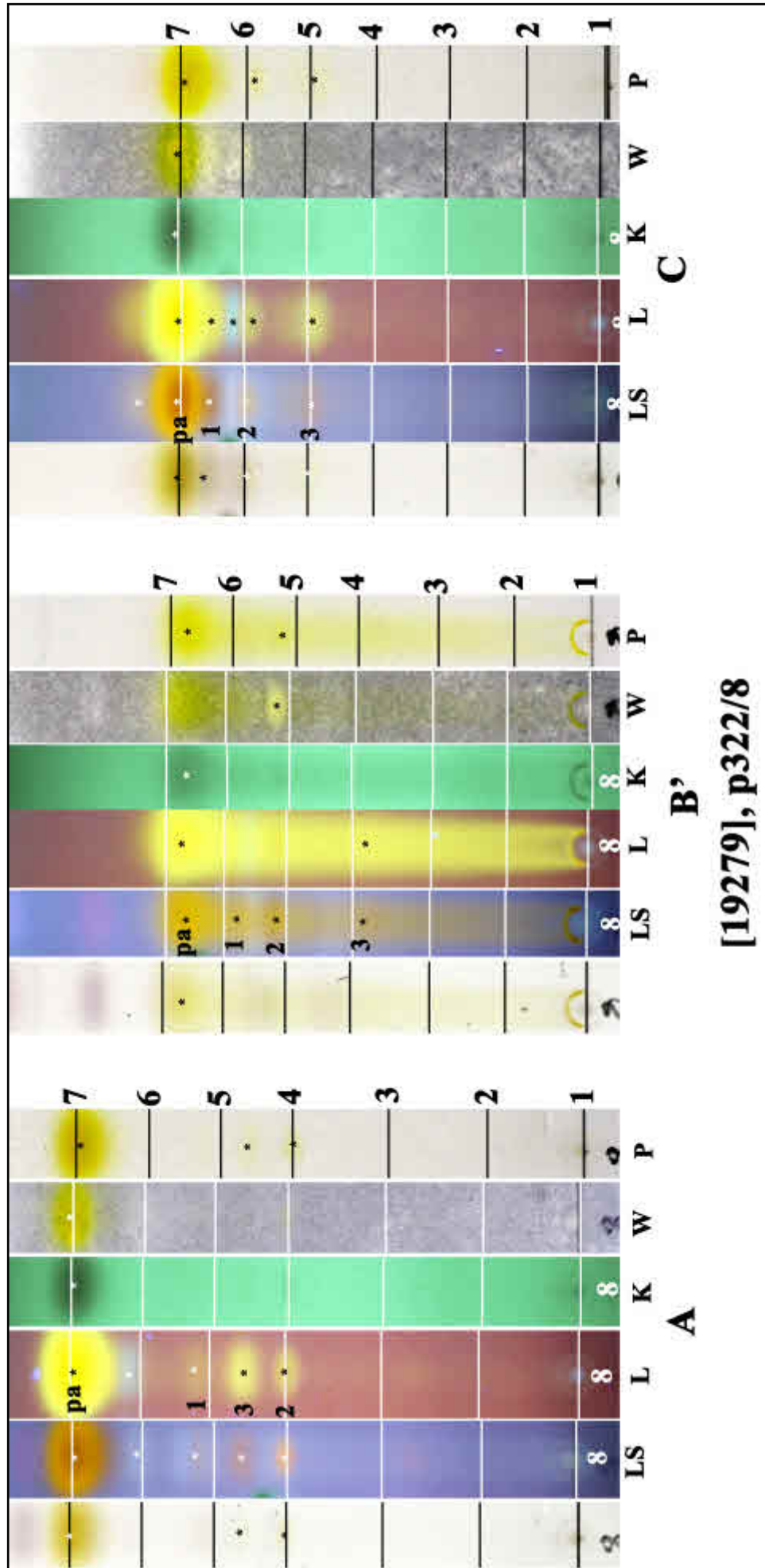


*Teloschistes chrysophthalmus*



*Teloschistes chrysophthalmus*

*Teloschistes chrysophthalmus*



pa: parietin, 1: fallacinal, 2: parietinic acid, 3: teloschistin