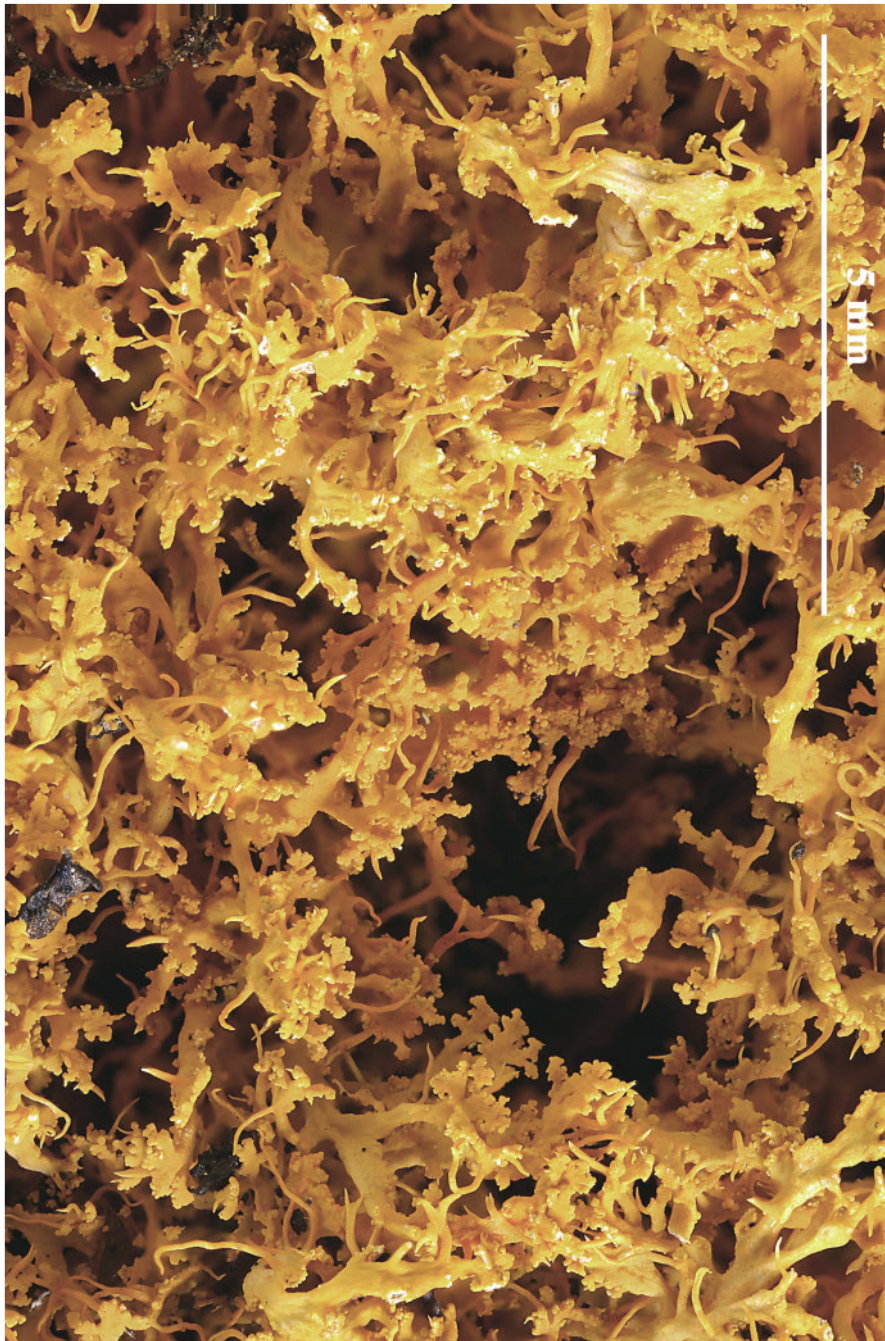
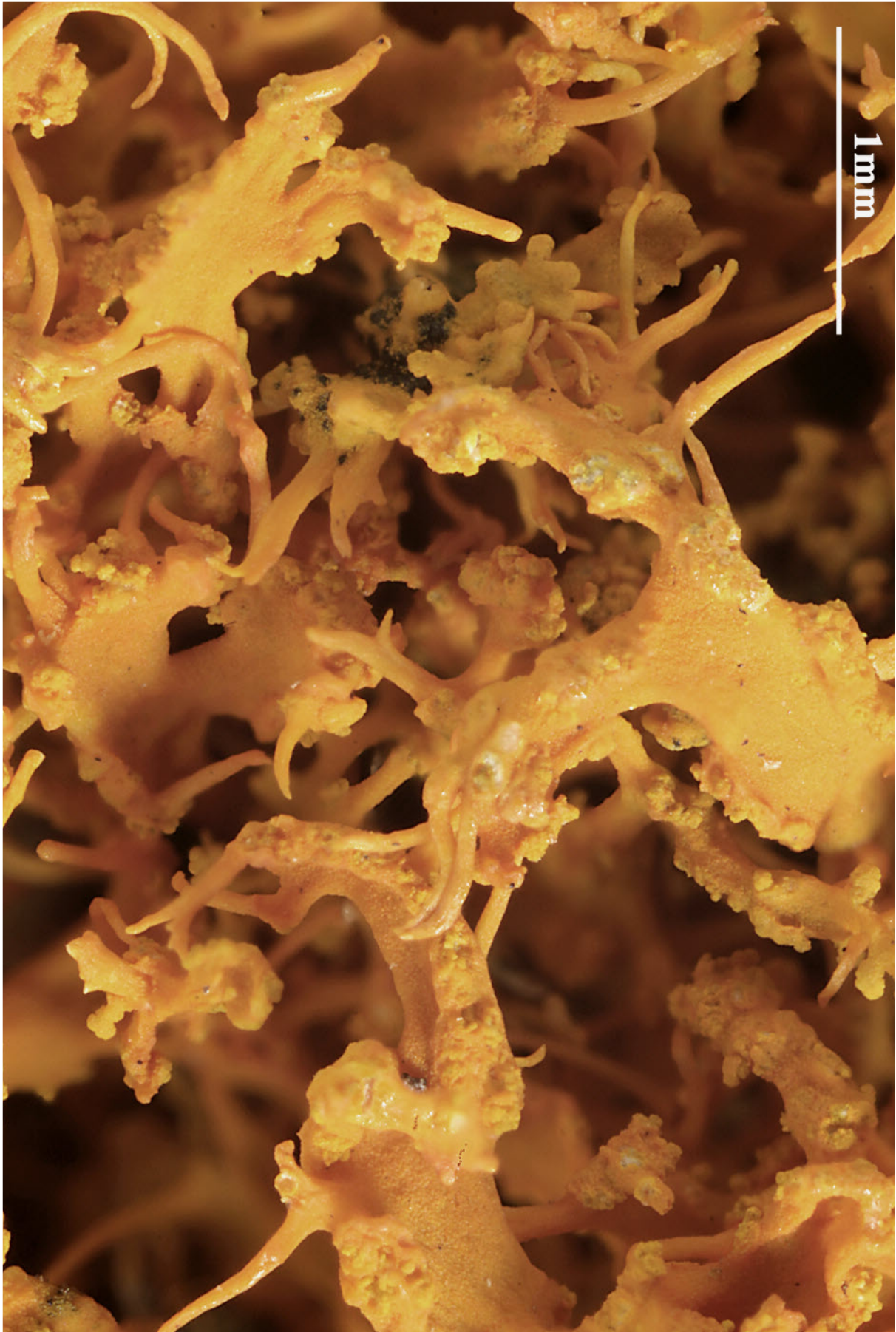


Teloschistes fasciculatus Hillmann

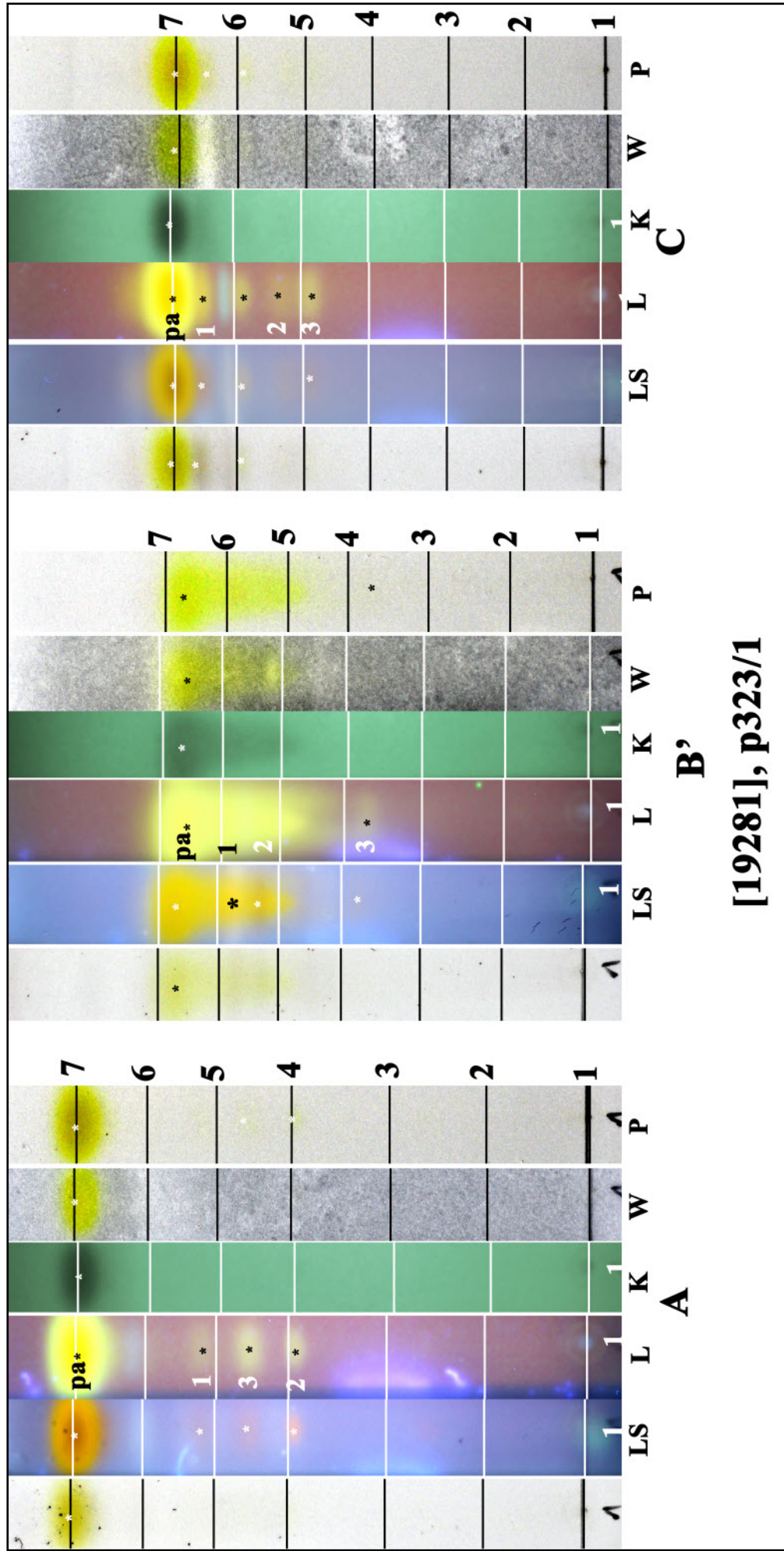
Thallus pulvinate clumps, 0.5-10 cm diam. Lobes 0,2-1 mm, flattened, laterally compressed to \pm subterete to terete, with marginal and terminal cilia. Soralia marginal or submarginal, concave, with orange blastidiate soredia. Saxicolous. Chemistry: Thallus K⁺ purple; parietin (major) teloschistin, fallacinal, emodin, erythroglauclin.

[19281], Australia, Victoria, Basalt Hill, Alpine National Park, Bogong High Plains, 20 km south-east of Mt. Beauty, 36°53' S, 147°18' E, 1650 m, growing on rock crevices in exposed alpine grasslands with basalt outcrops and southerly aspect. Leg. J.A. Elix (40388) & H. Streimann 17.02.1994. Chemistry: parietin by TLC, anal. J.A. & S.A. Elix. LICHE-NES AUSTRALASICI EXSICCATI NO. 297.





Teloschistes fasciculatus



Teloschistes fasciculatus

pa: parietin, 1: fallacinal, 2: parietinic acid, 3: teloschistin