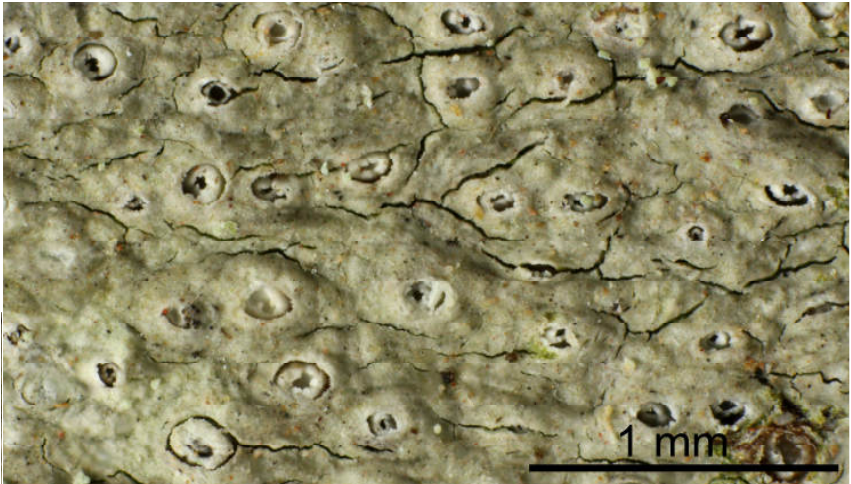
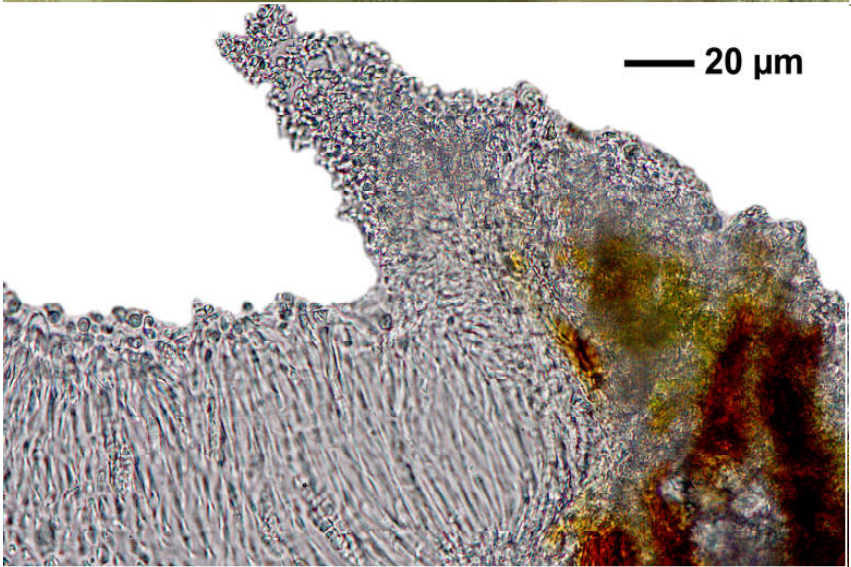


Thelotrema bicinctulum Nyl.

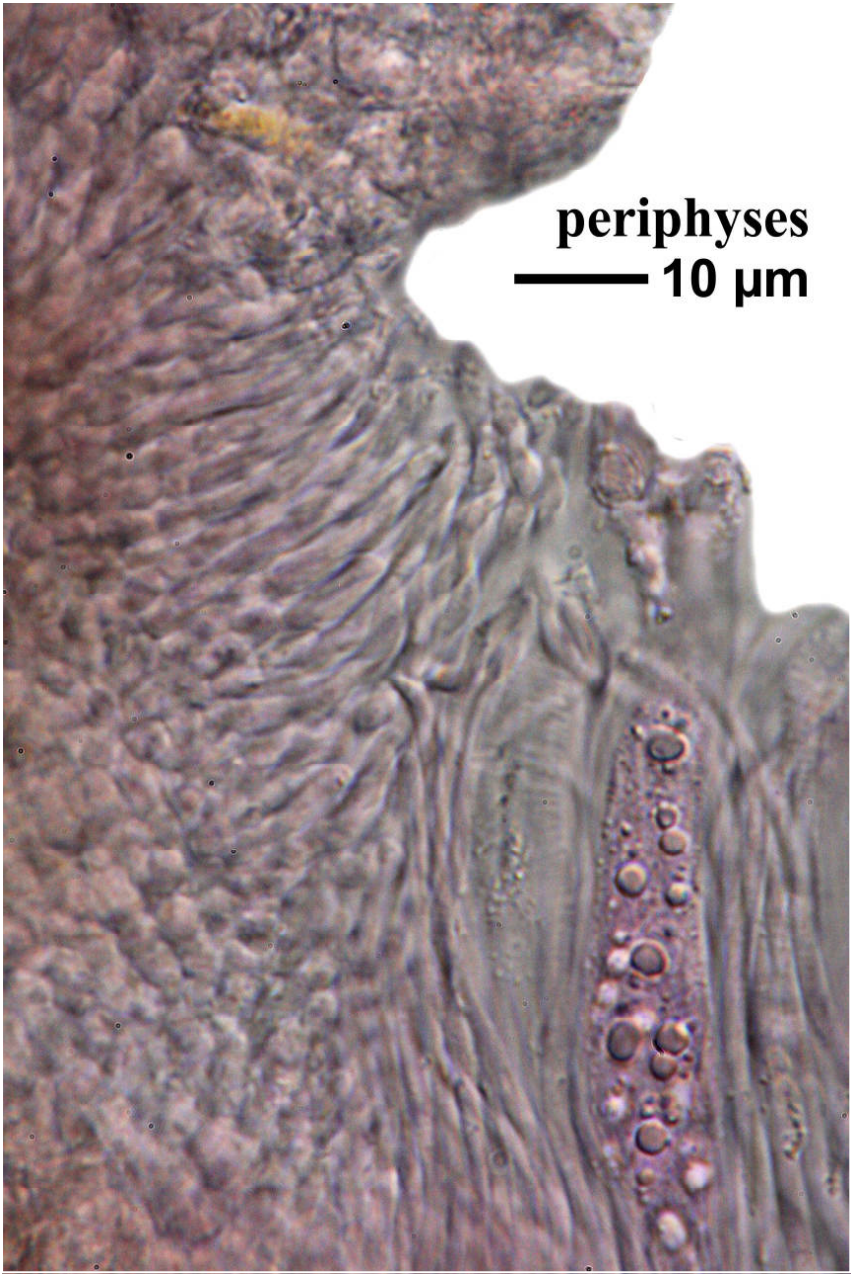
Thallus greenish-grey, glossy, somewhat rugulose, without isidia or soralia. Apothecia immersed to somewhat erumpent, c. 0.3 mm wide, ostiolum 0.16 mm wide, with slit between thalline margin and excipulum. Excipulum not carbonized, without columella, with lateral not spinulose periphysoids. Hamathecium not insperse, J-. Ascospores transversely (4-)5-7-septate, hyaline, 8/ascus, 16-21(-25) x 4-5(-7) μm , J-. Chemistry: stictic acid (maj), hypostictic acid (min), constictic aci; Thallus K+ yellow-orange, P \pm yellowish.

[17575], Thailand, Trat province, Had Sai Dum, Mangroven Wald, 12.17332° N, 102.40616° E, 0 m. Leg. Schumm (IAL 7) 16.01.2012, det. Schumm 2012, test. Kalb 06.2012.

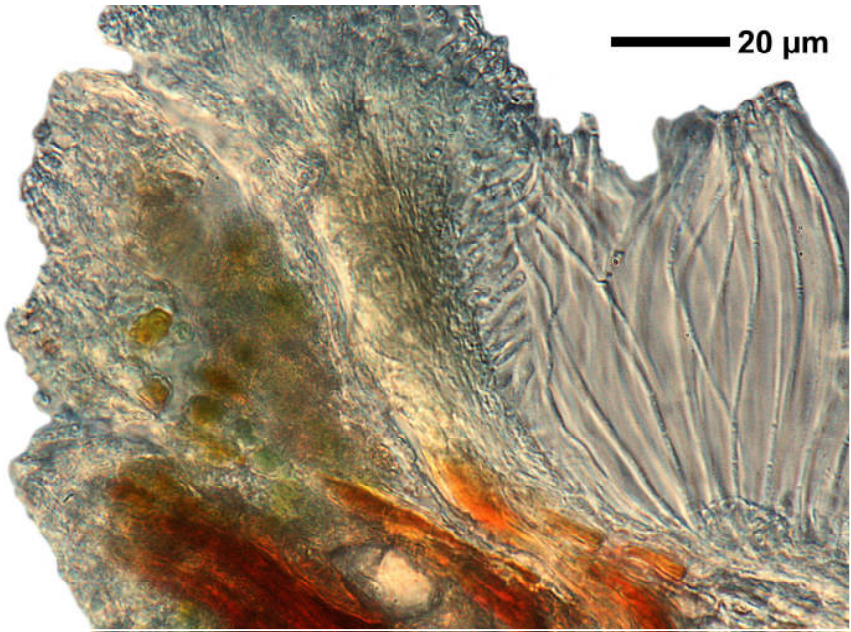




Thelotrema bicinctulum

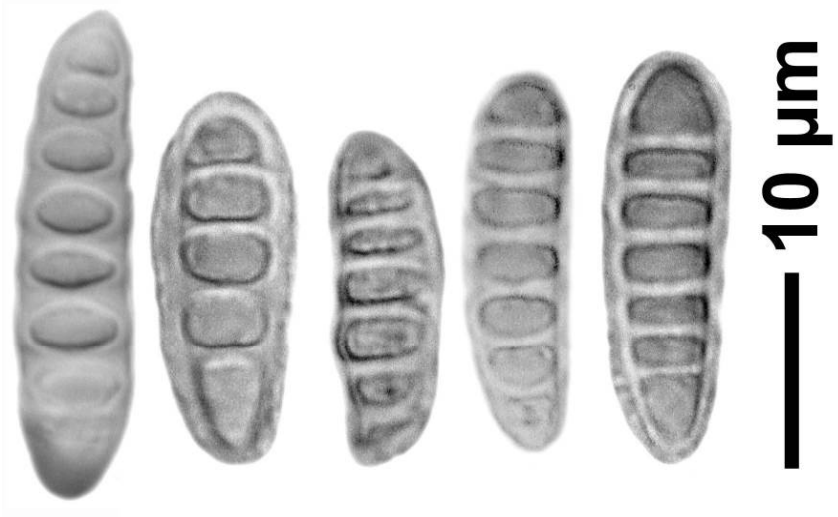
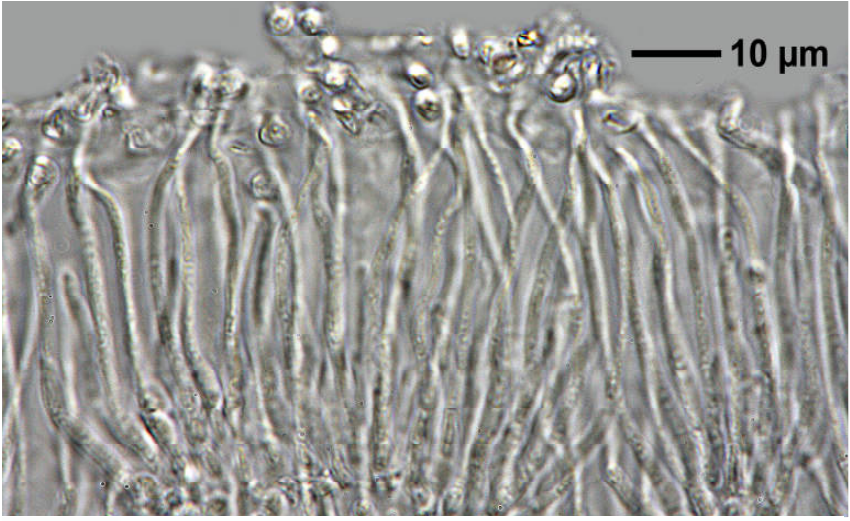


Thelotrema bicinctulum



20 μm

Thelotrema bicinctulum



Thelotrema bicinctulum