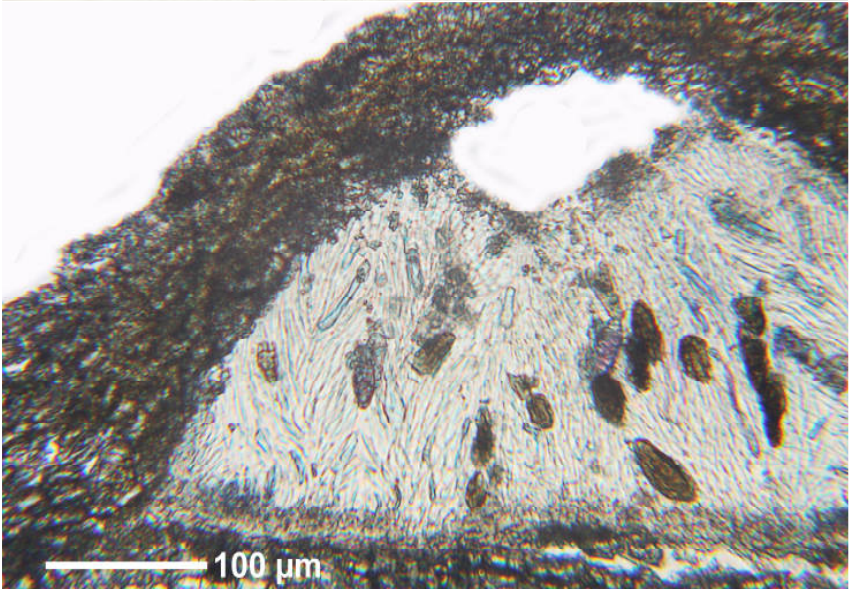
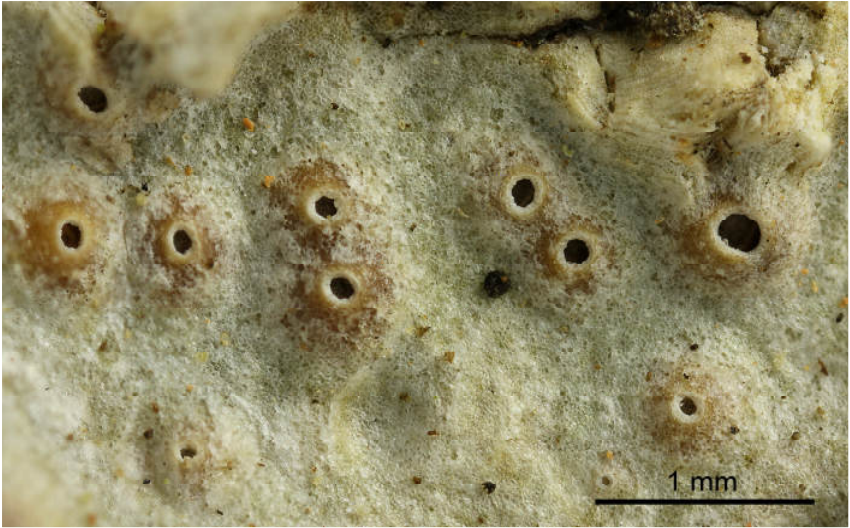
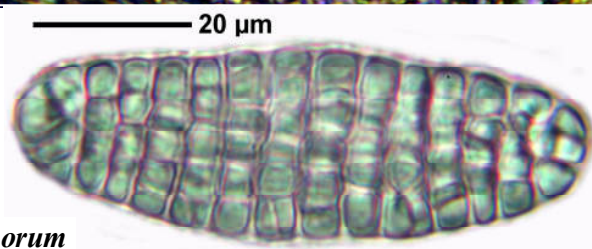
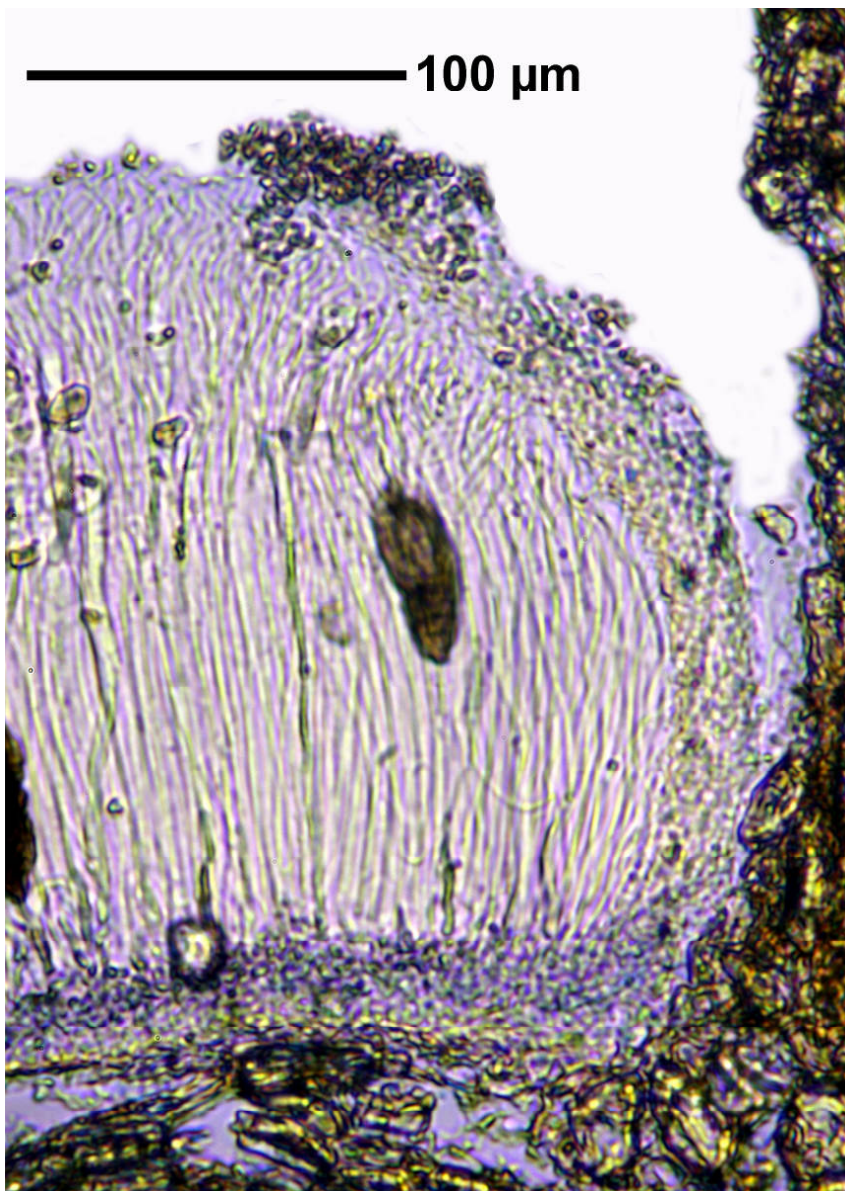


*Thelotrema monosporum* Nyl.

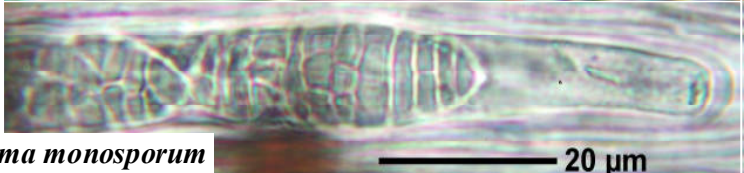
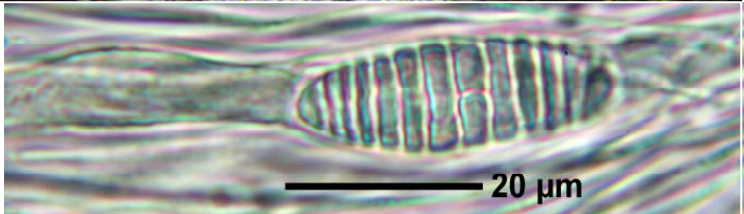
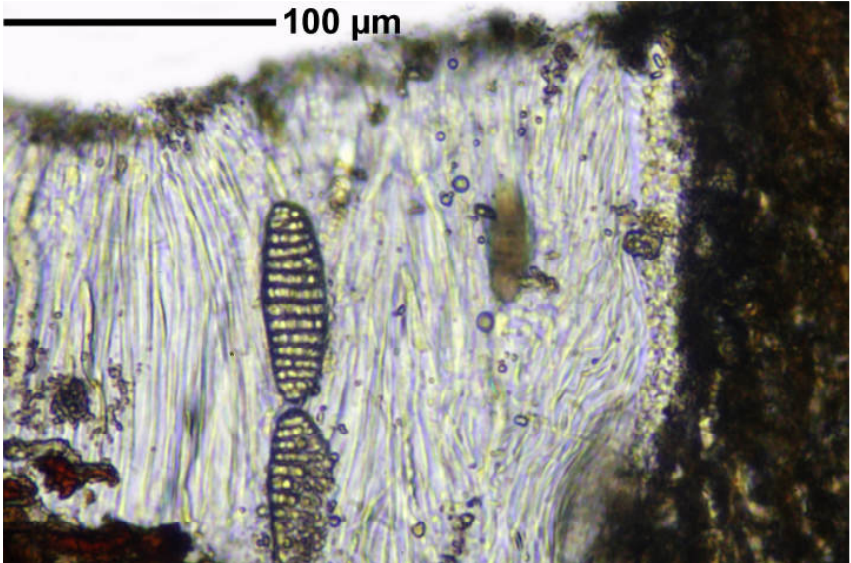
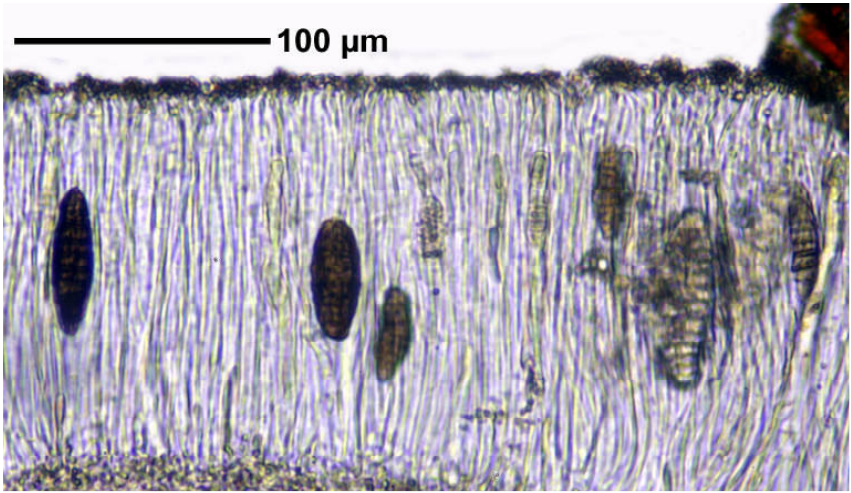
Spores muriform, dark-grey, old brown, I-, 2/ascus, up to 90-98 x 25-27  $\mu\text{m}$ . Excipulum not carbonized. Palaeotropical.

[14368], Seychellen, Praslin, Nationalpark Vallée de Mai, 4°19.933' S, 55°44.393' E, 140 m. Leg. Schumm & Frahm 28.09.2008, det. Aptroot 2008.





*Thelotrema monosporum*



*Thelotrema monosporum*