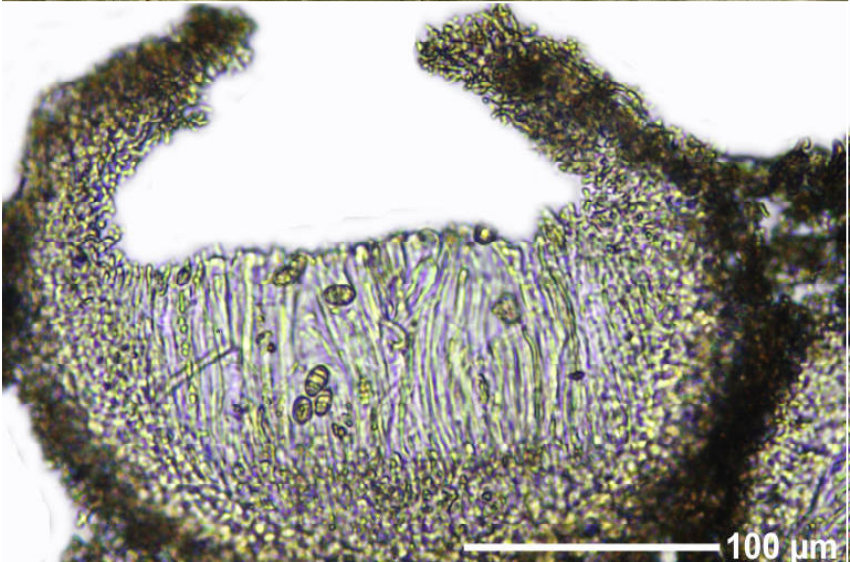
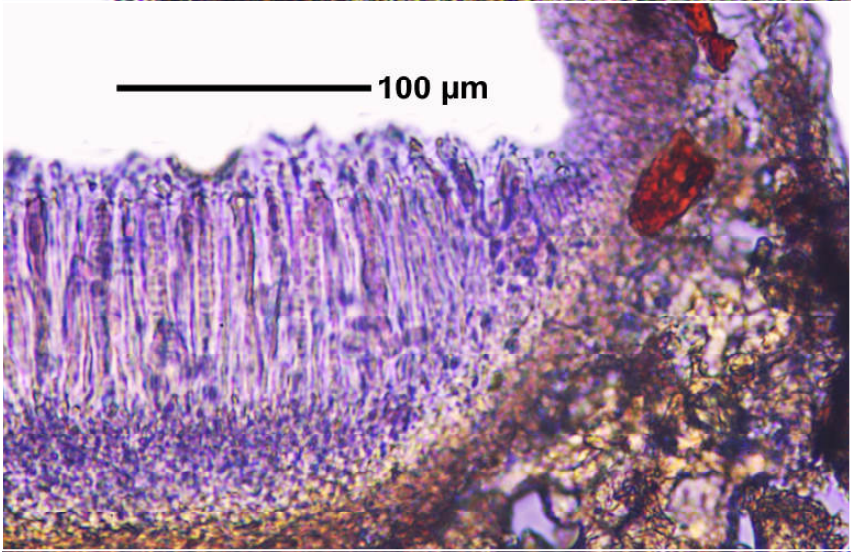
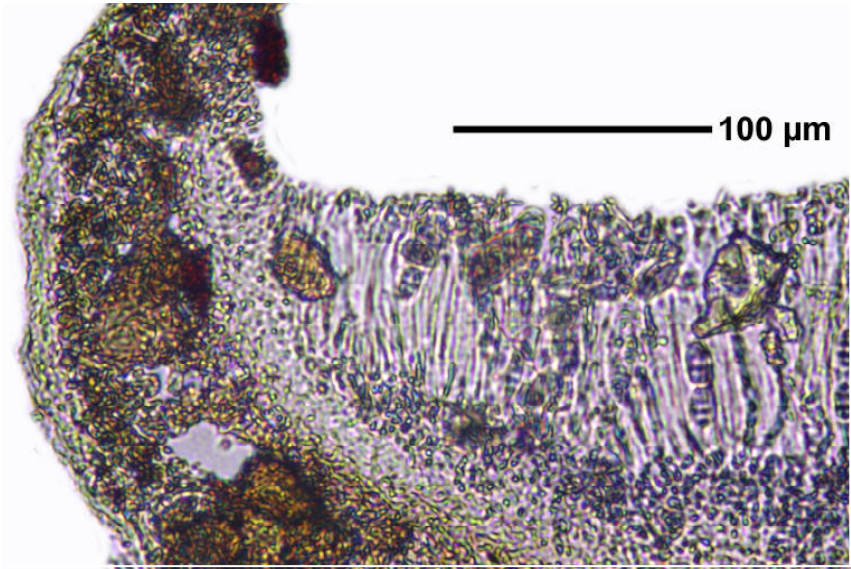


*Thelotrema santessonii* Hale

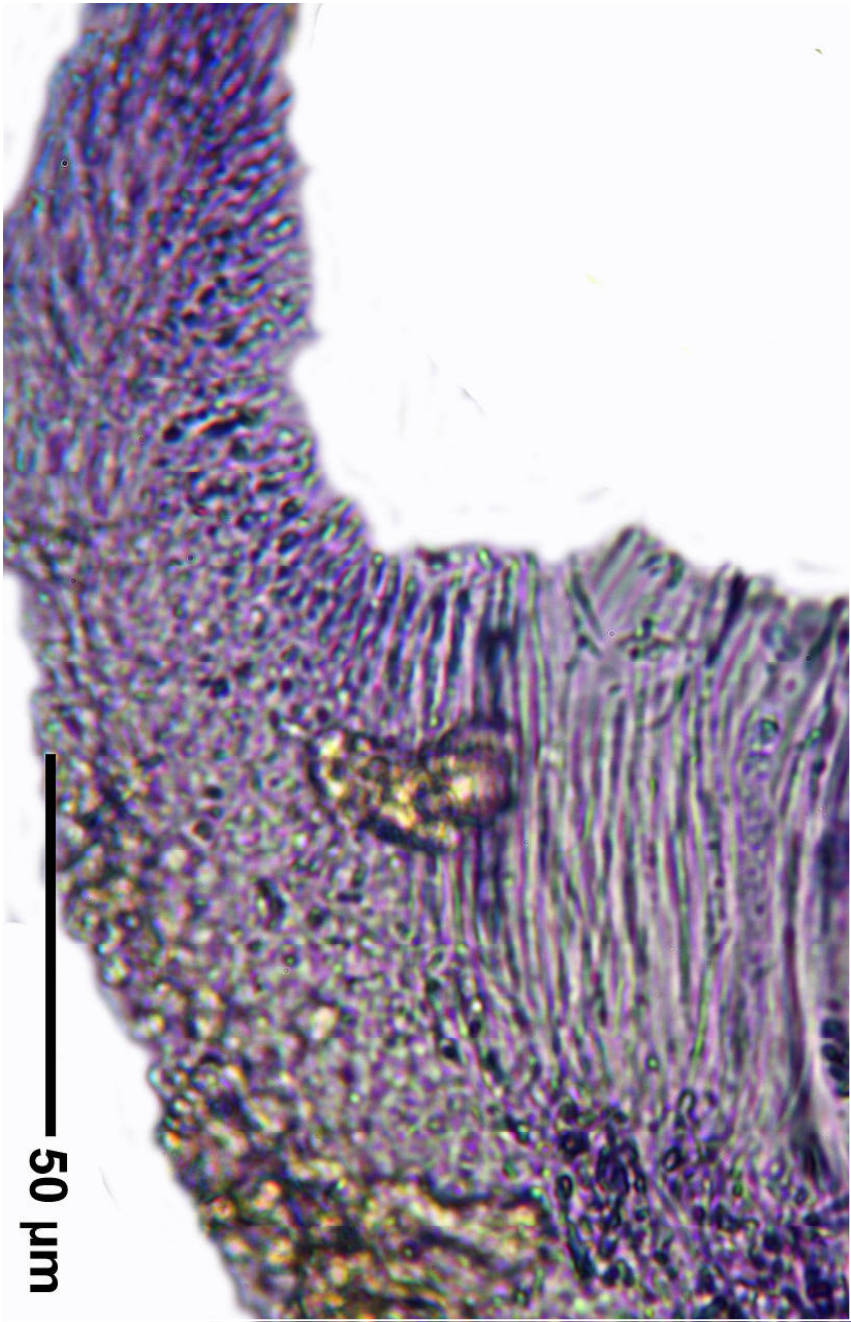
Spores hyaline, submuriform,  $17 \times 10 \mu\text{m}$ , 8/ascus, I+ blue. Excipulum hyaline. Thallus seemingly isidiate with tuberculate apothecium initials. African.

[14612], Seychellen, Mahe, Morne Seychelles National Park, Sentier de Copolia,  $4^{\circ}38.828' \text{ S}$ ,  $55^{\circ}27.166' \text{ E}$ , ca. 410 m. Leg. Schumm & Frahm 08.10.2008, det. Aptroot 2008.

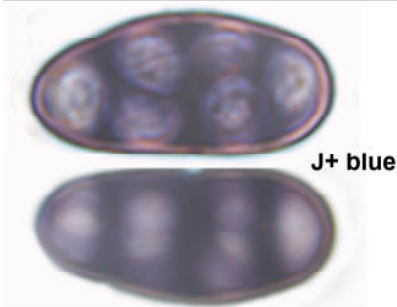
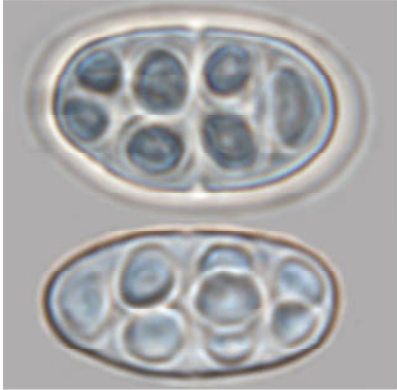
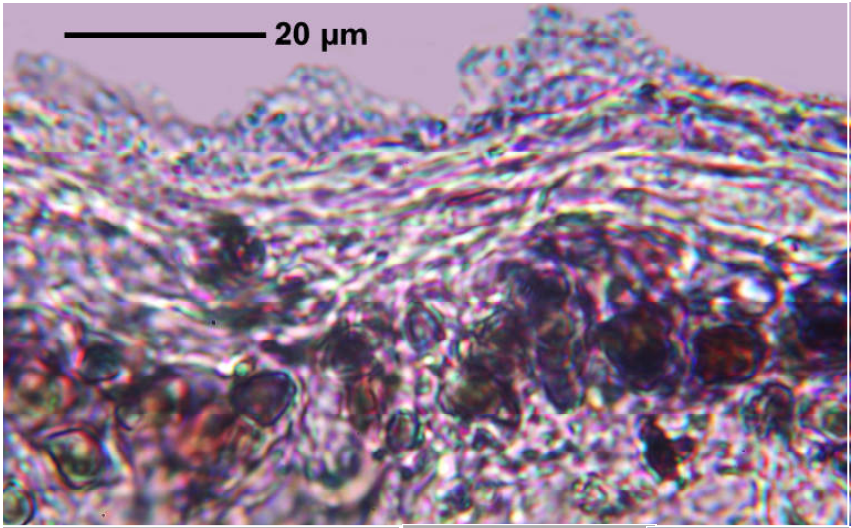




*Thelotrema santessonii*



*Thelotrema santessonii*



*Thelotrema santessonii*