

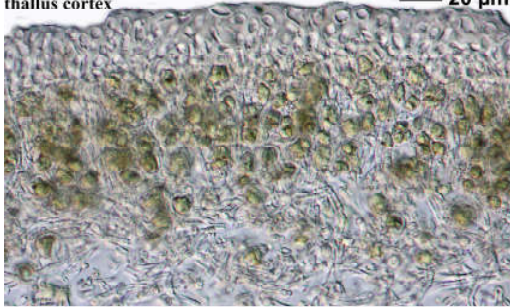
Toninia sedifolia (Scop.) Timdal
[= *Tonina coeruleonigricans* (Lightf.) Th.Fr.]

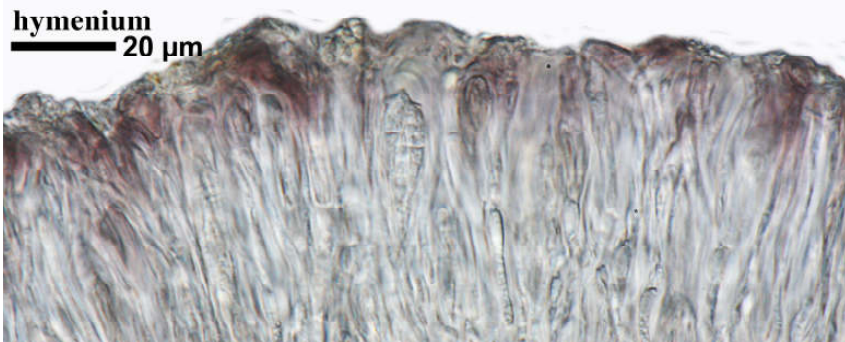
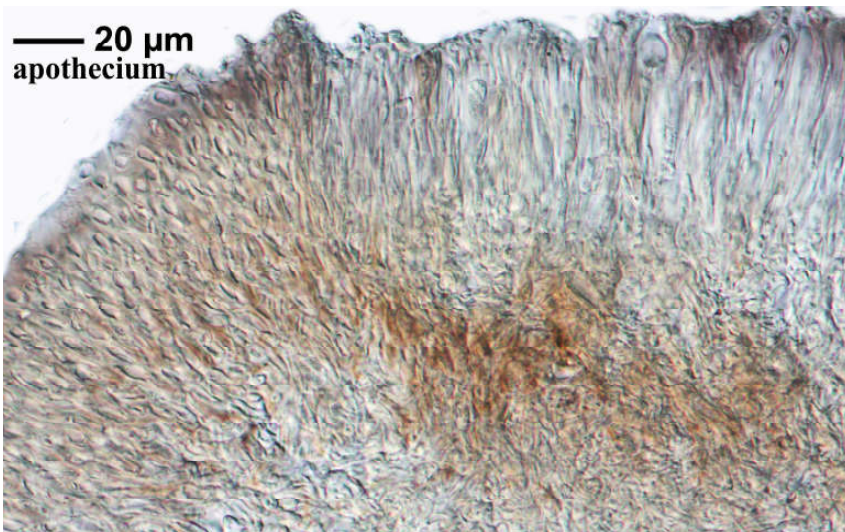
Thallus weiß, schuppig, blasig hochgewölbt, mehlig. Apothecien schwarz, sitzend. Epithecium K+ violett. Sporen hyalin, 8/Ascus, 1-2-zellig, $20 \times 4 \mu\text{m}$.

[1520], Germany, Baden-Württemberg, Schwäbische Alb, Kreis Heidenheim, in Erdspalten auf Kalkfelsen im Zwerchstubental, ca. 600 m. Leg et det. Schumm 10.08.1963.



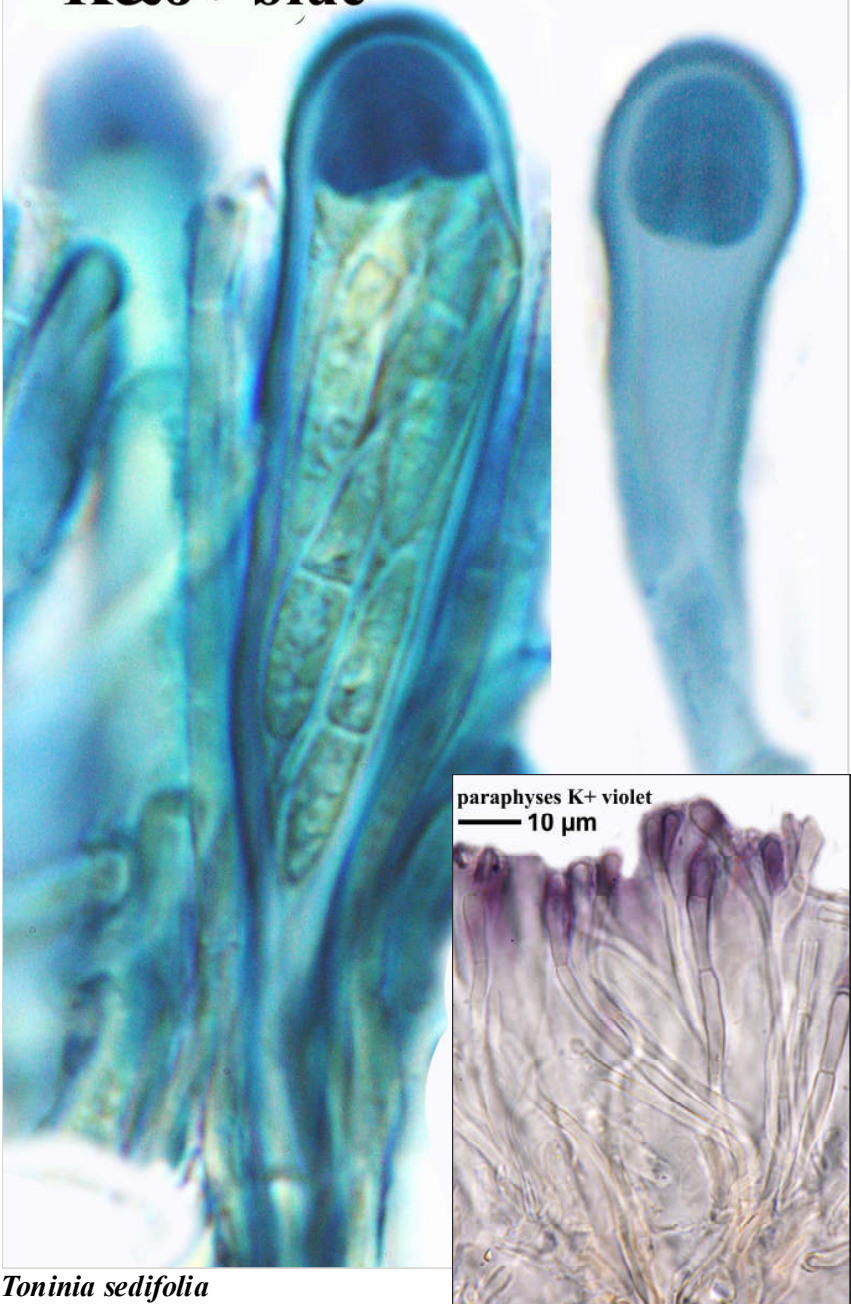
thallus cortex — 20 μm





Toninia sedifolia

— 10 μm
K&J+ blue



Toninia sedifolia