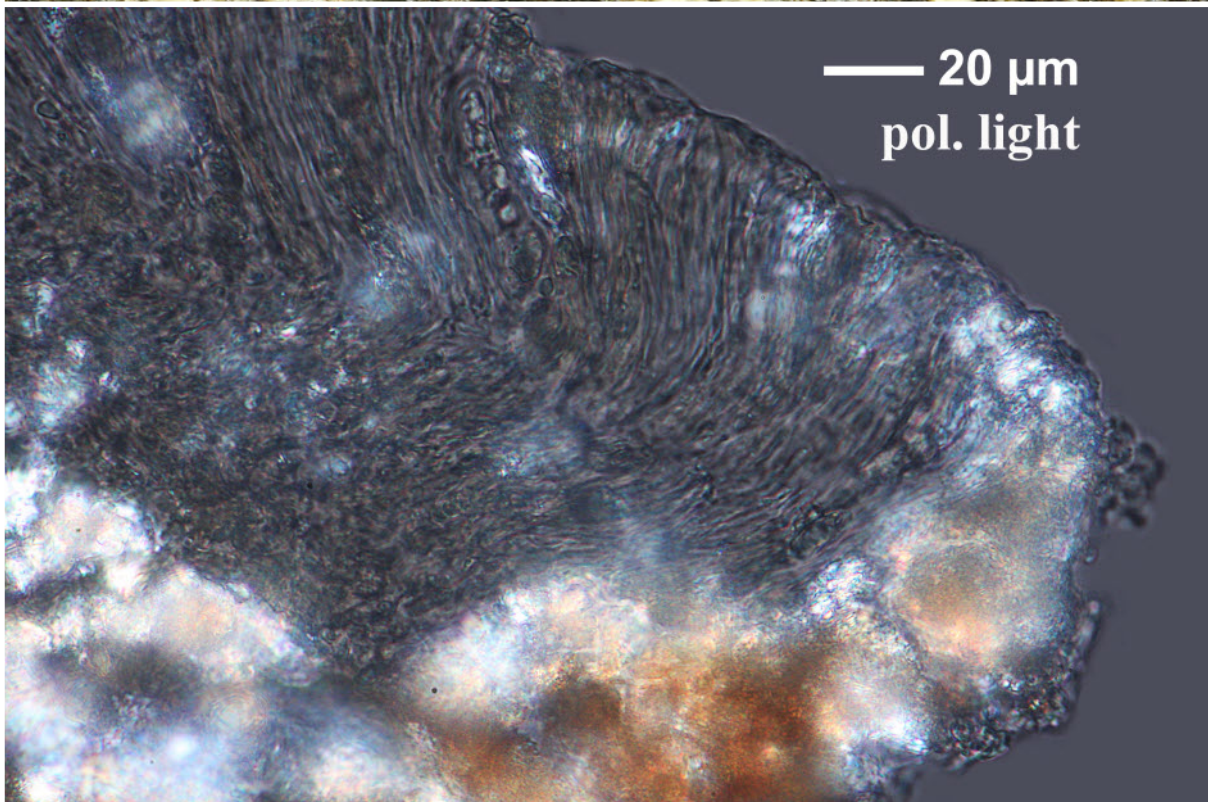
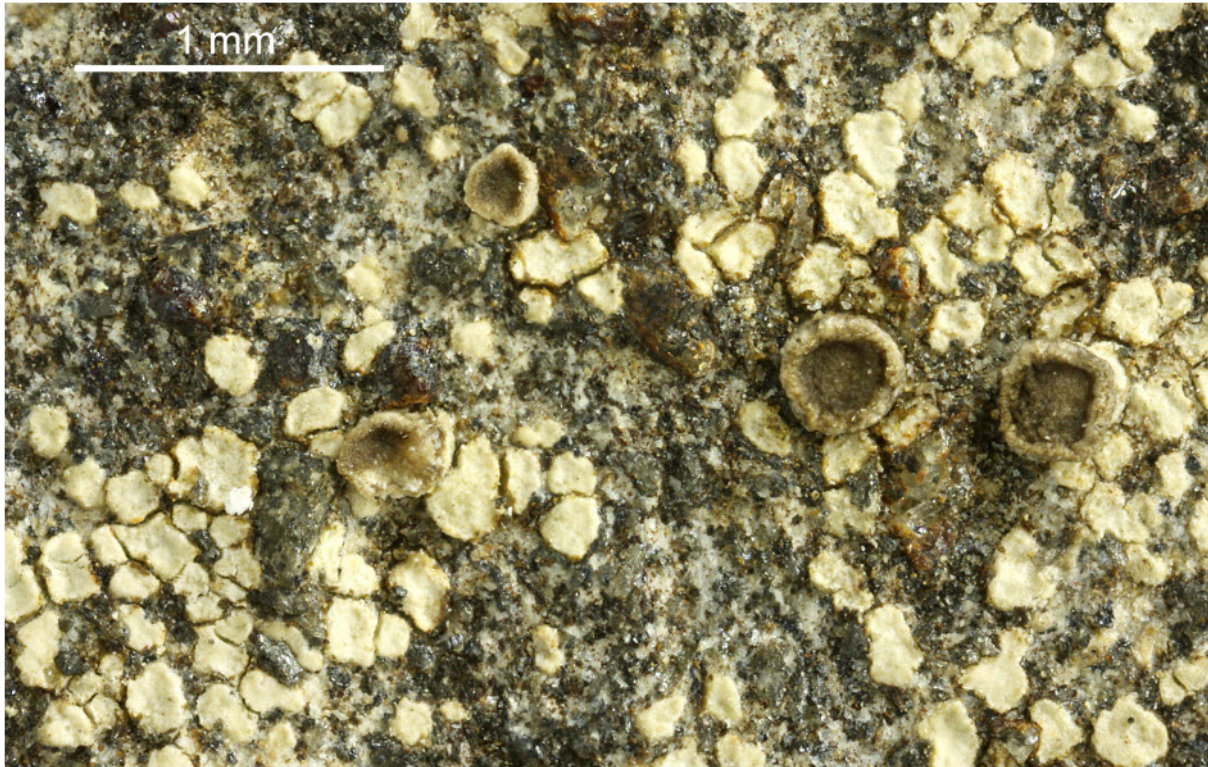
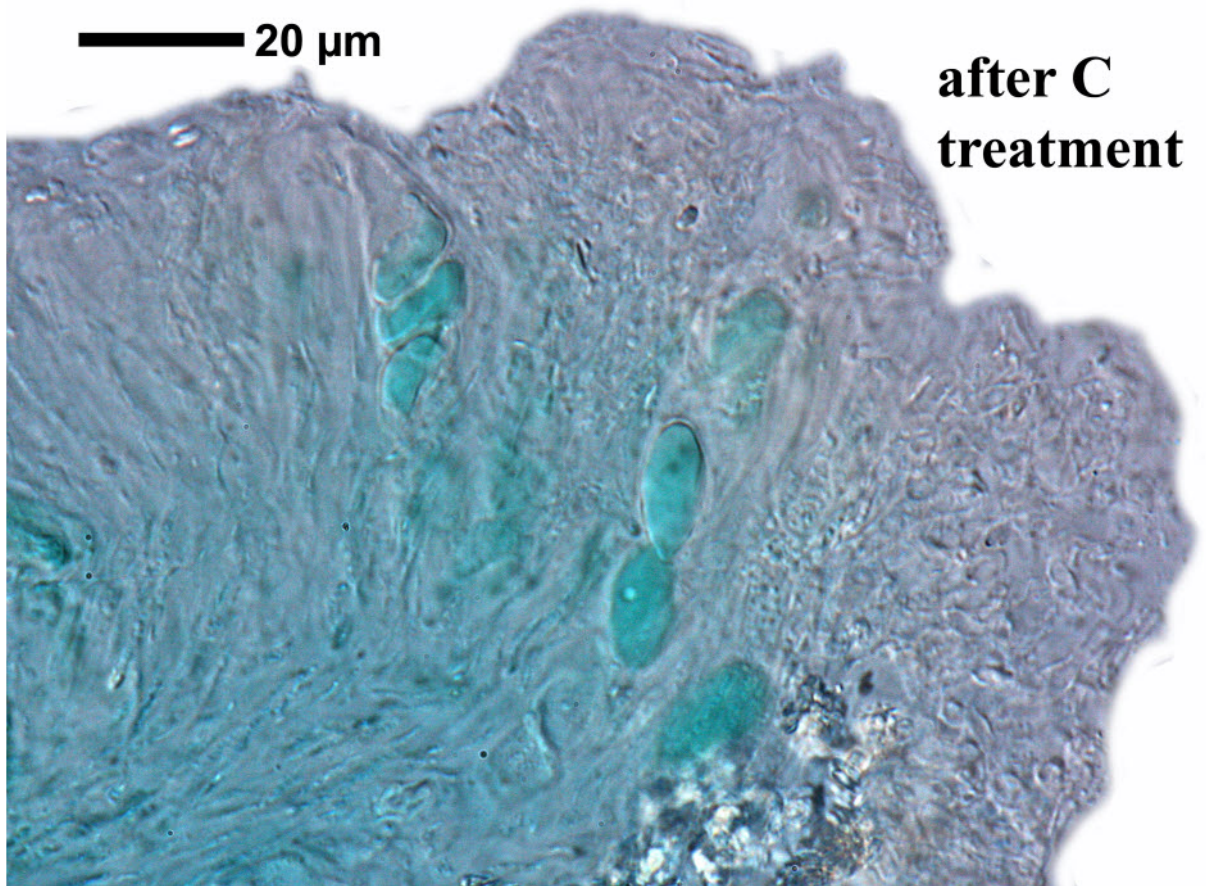


*Trapelia coarctata* (Sm.) Choisy

Thallus ohne Sorale, C+ rot (Gyrophorsäure). Apothecien im Schnitt C+ flüchtig rot. Sporen 1-zellig, hyalin, 8/Ascus, 12-18.5 x 6-8.5 µm.

[11287], Portugal, Madeira, zwischen Rabaçal und Boca da Encumeada am Ostrand von Paúl da Serra nahe Bica da Cana, licht-, windoffen, tundrenartig, Felsbrocken am Boden. 32°44.225' N, 17°03.653' W, 1530 m. Leg. et det. Schumm 26.12.2003.





*Trapelia coarctata*