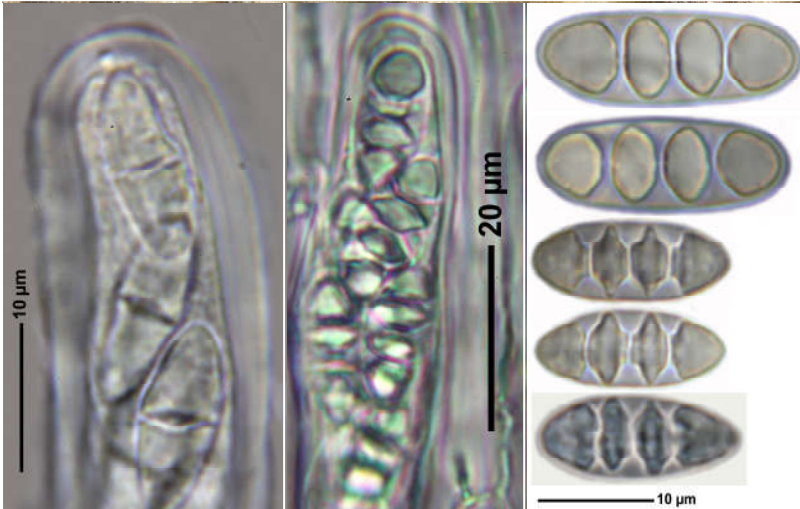
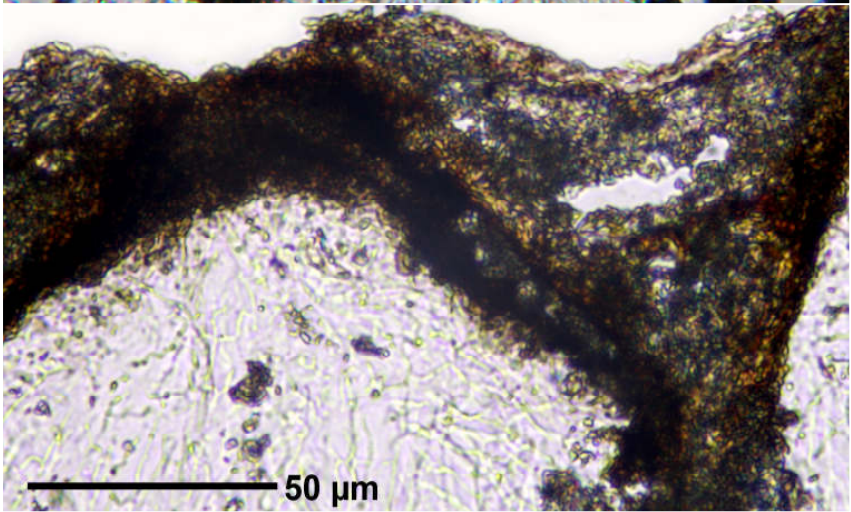
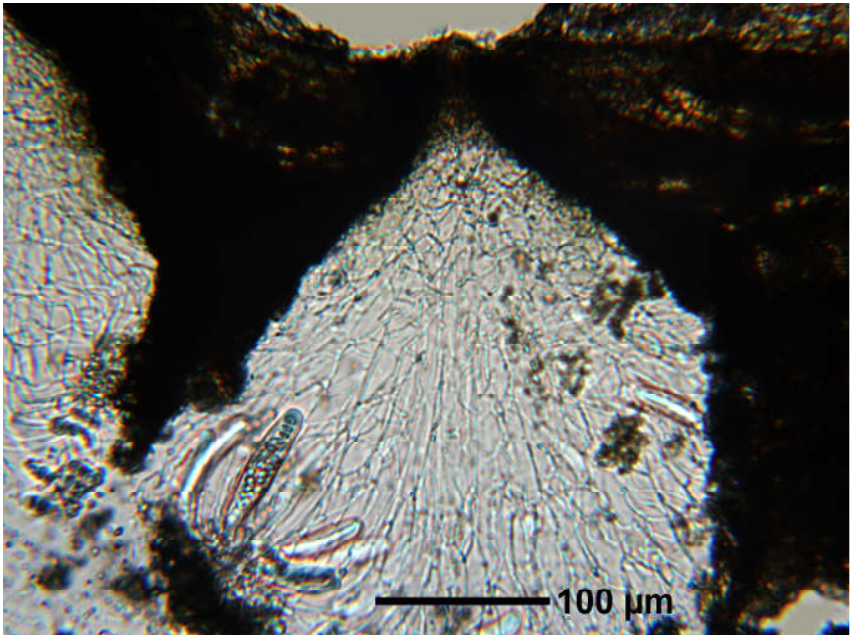


Trypethelium nitidiusculum (Nyl.) R.C.Harris

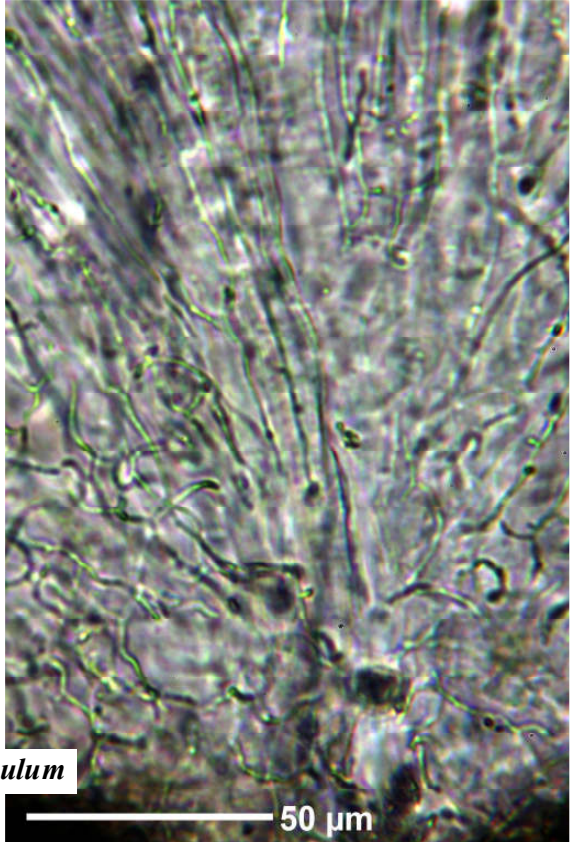
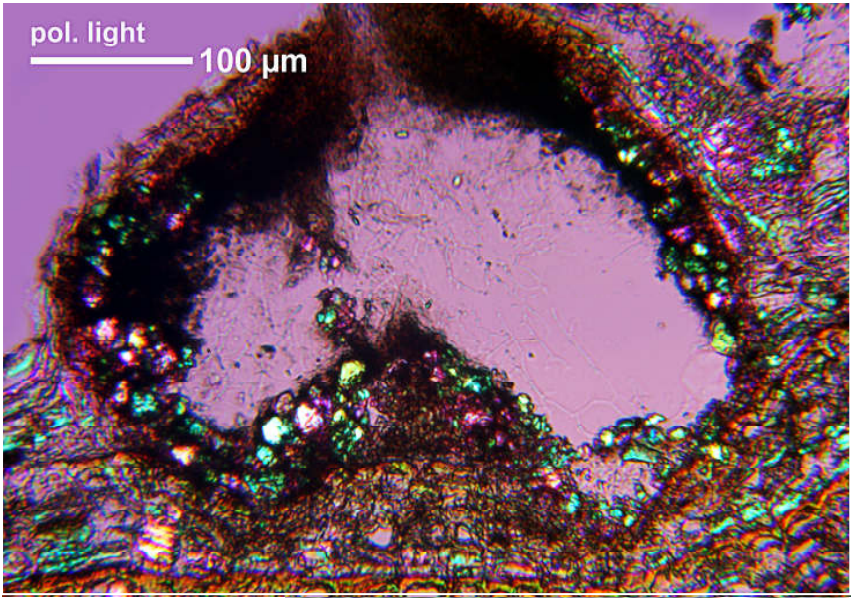
Thallus olivaceous. Spores hyaline, 8/ascus, 3-septate, 22-25 x 6-7 μm . Hamathecium I-. Paraphyses lax, with anastomoses. Thallus K-, UV- (to weak yellowish). Pantropical.

[14498], Seychelles, La Digue, zwischen Belle Vue (Nid d' Aigles) und Fond Piment, 4°22' S, 55°50' E, ca. 340 m. Leg. Schumm & Frahm 03.10.2008, det. Aptroot 2008.





Trypethelium nitidiusculum



Trypethelium nitidiusculum