

Verrucaria baldensis A.Massal.

[= *Verrucaria parmigera* J.Steiner]

[= *Verrucaria steineri* Kusan]

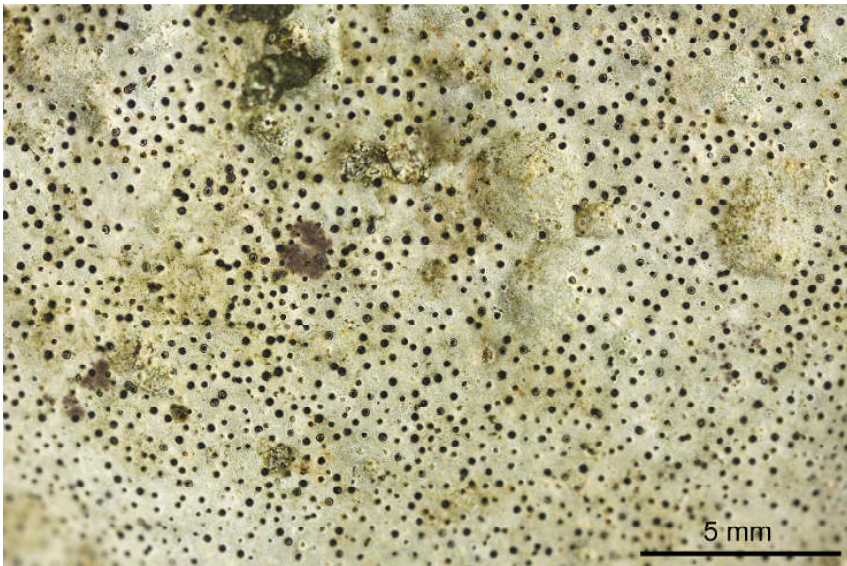
[= *Bagliettoa baldensis* (A.Massal.) Vezda]

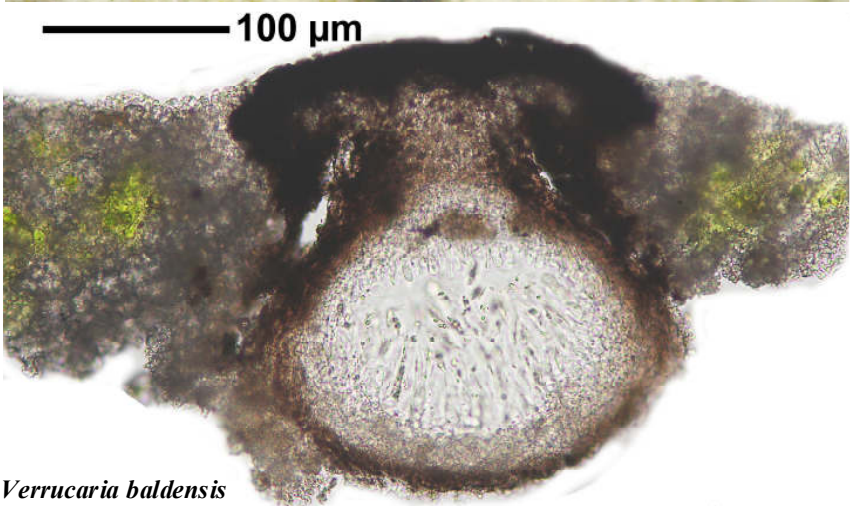
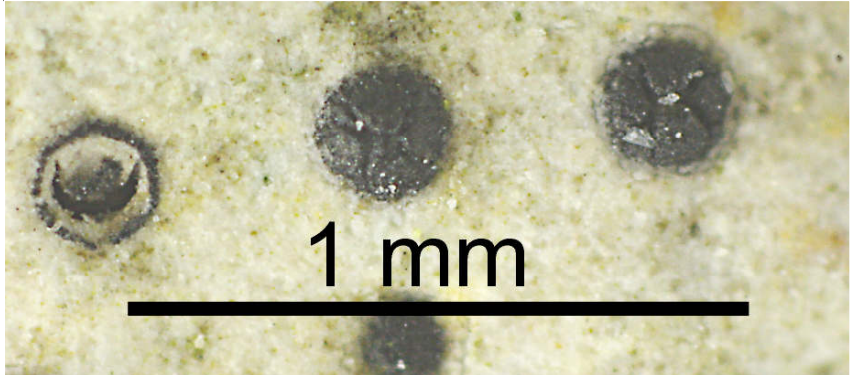
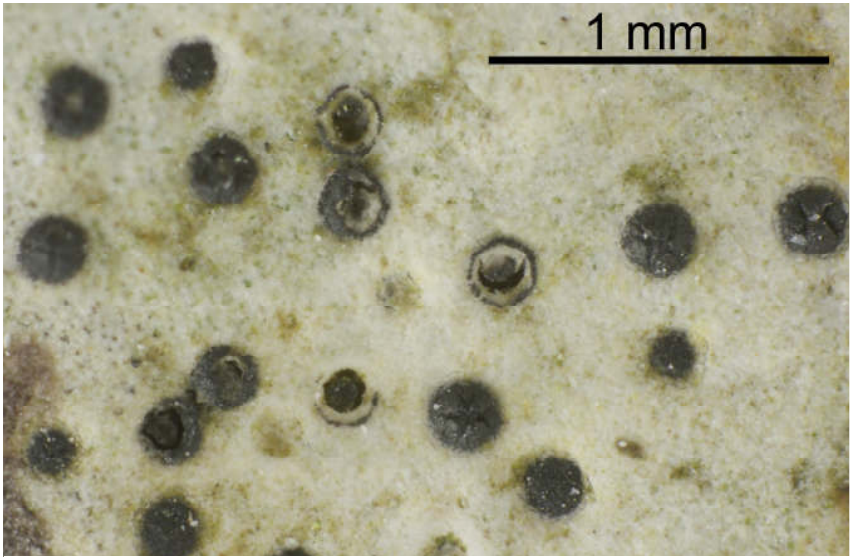
[= *Bagliettoa parmigera* (J.Steiner) Vezda & Poelt]

Thallus hellgrau, zusammenhängend, nicht rissig, mit feinen 0,01 mm großen grünlichen Pünktchen (feucht, Algen). Perithezien völlig eingesenkt, oben mit einem schwarzen, 0,16-0,22 mm breiten Deckel verschlossen, der nach dem Abfallen einen feinen schwarzen, äußeren Ring zurück lässt. Deckel oft mit 3-5 radialen Rissen. Perithezienwand außen ringsum auf 8-10 μm Dicke dunkelbraun, innen auf 8-15 μm Dicke hell. Sporen hyalin, 1-zellig, fast immer verschrumpelt und deformiert, 13-18 x 5-9 μm .

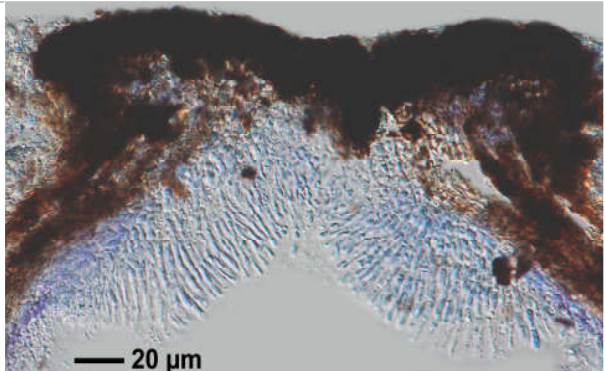
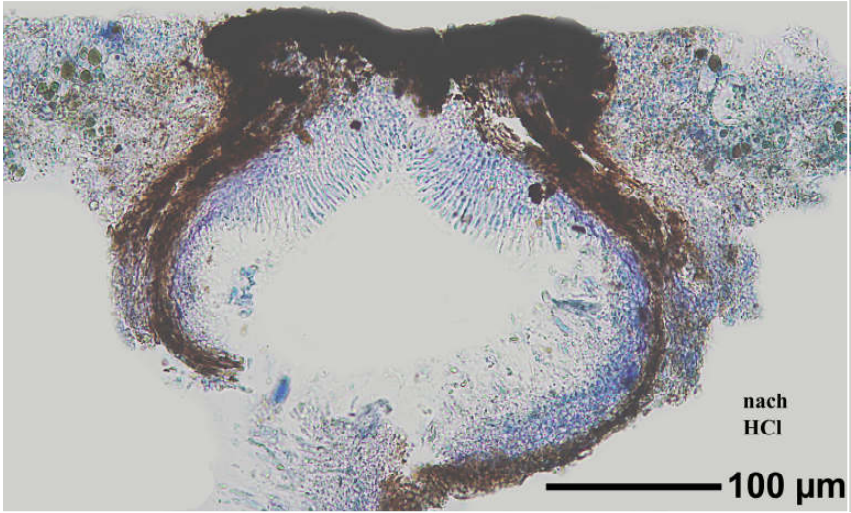
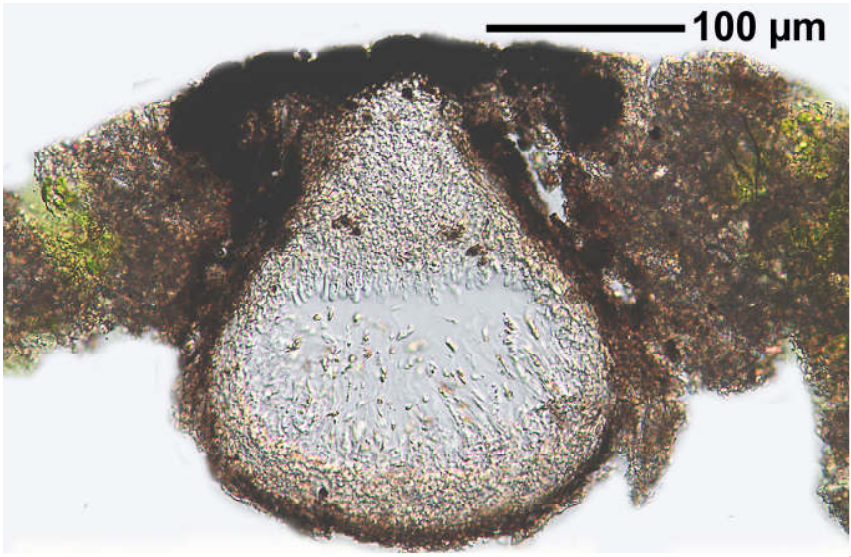
[16566], Germany, Baden-Württemberg, Kreis Göppingen, Messelstein bei Donzdorf, 48,69045° N, 9,83113° E, 750 m. An schattigem Kalkblock. Leg. et det. Schumm 26.07.2010, test. A. Aptroot 2011.

Lit. Halda, J. (2003): A taxonomic study of the calcicolous endolithic species of the genus *Verrucaria* with the lid-like and radiately opening involucrellum. - *Acta musei Richnoviensis Sect. natur.* 10(1): 1-148.

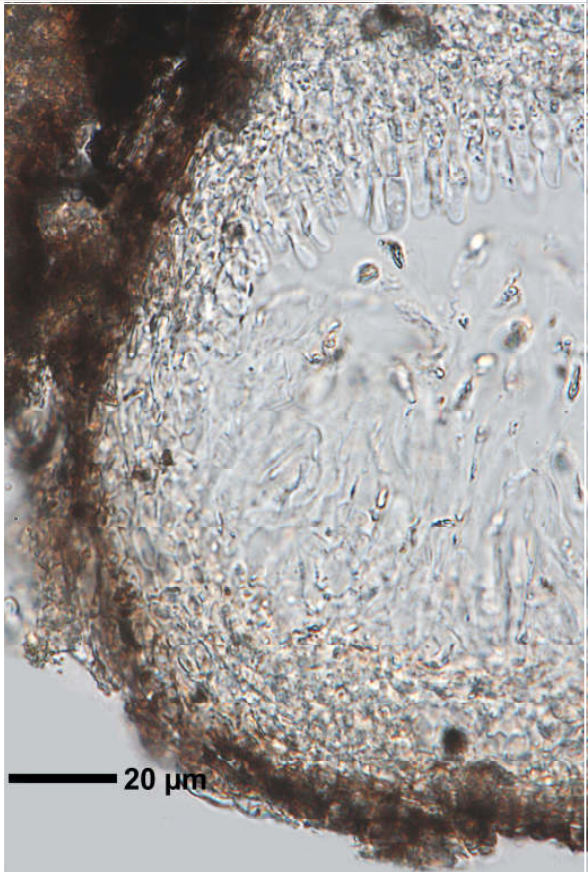
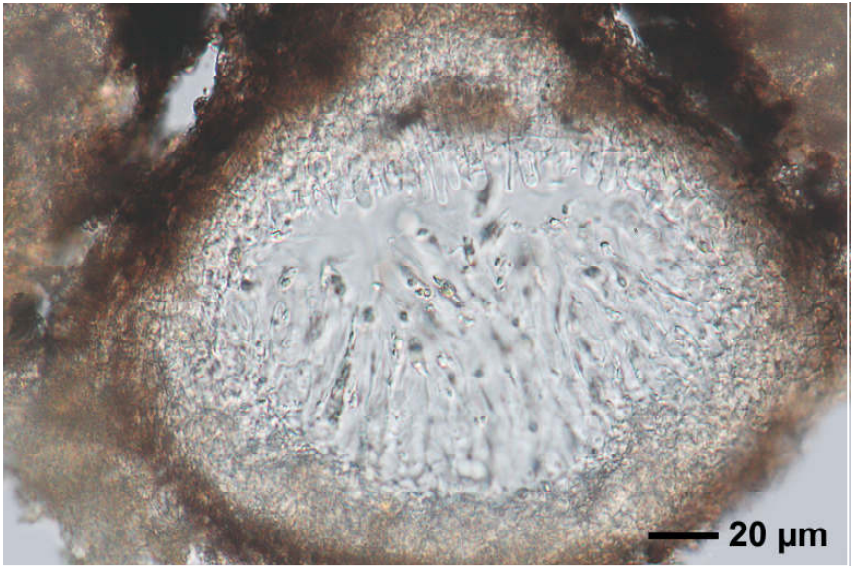




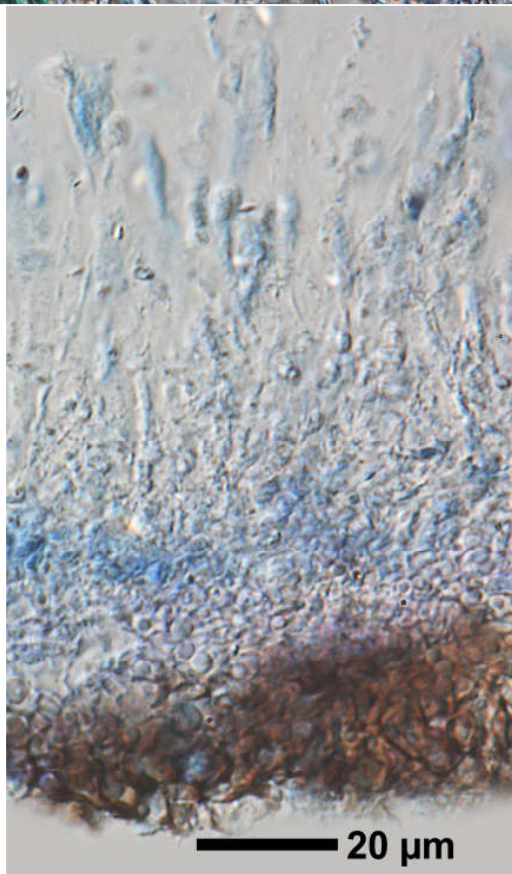
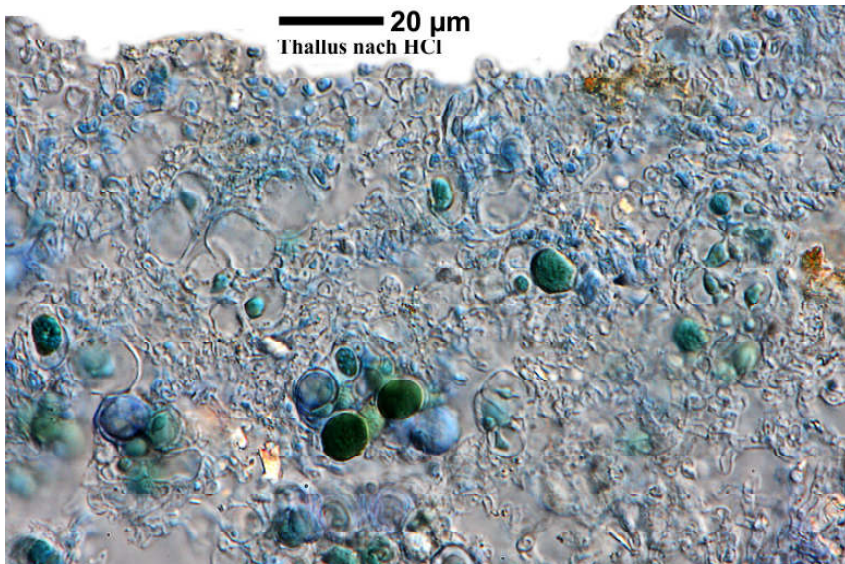
Verrucaria baldensis



Verrucaria baldensis



Verrucaria baldensis



Verrucaria baldensis