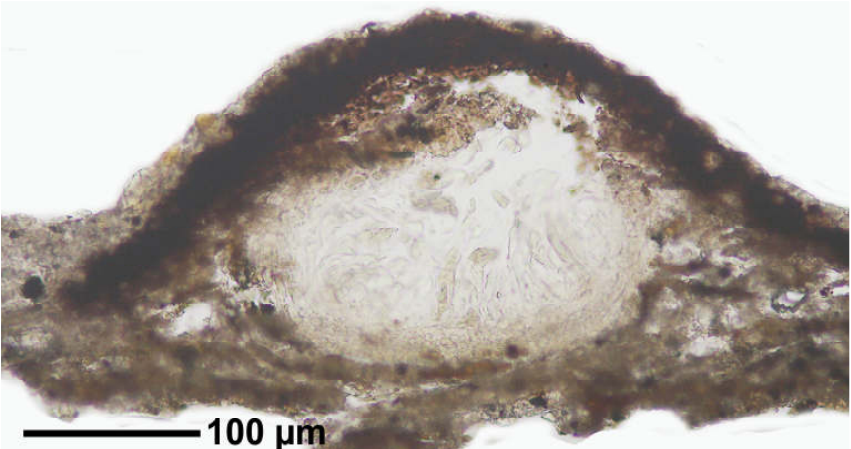
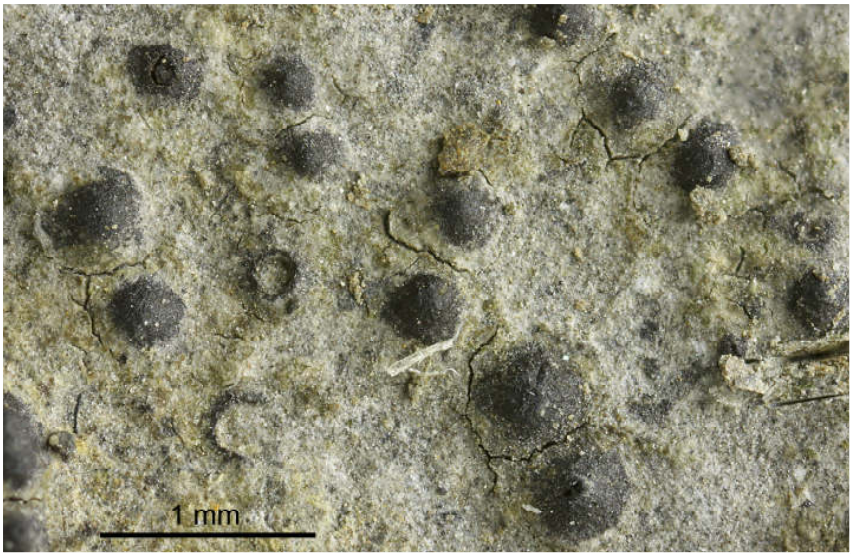
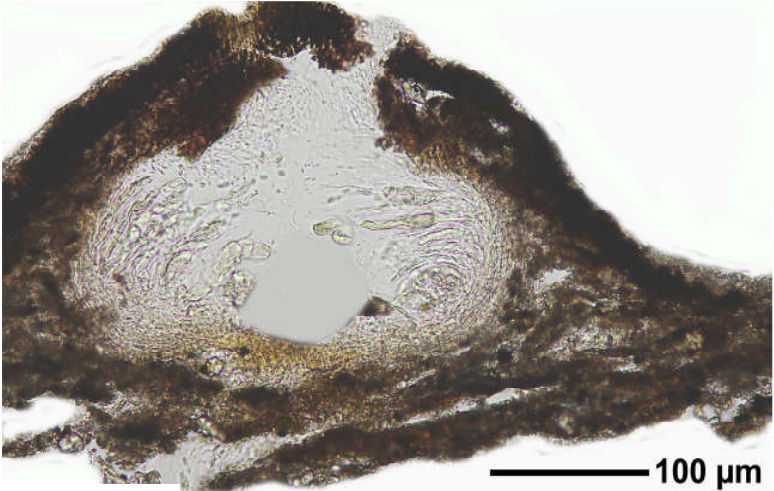
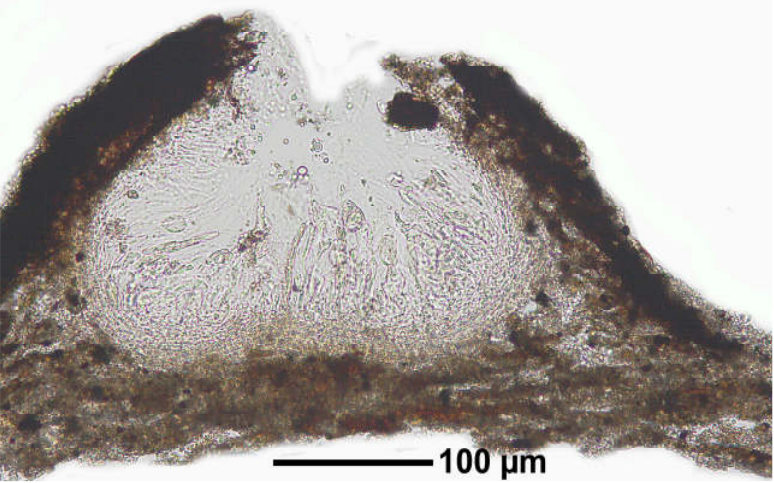
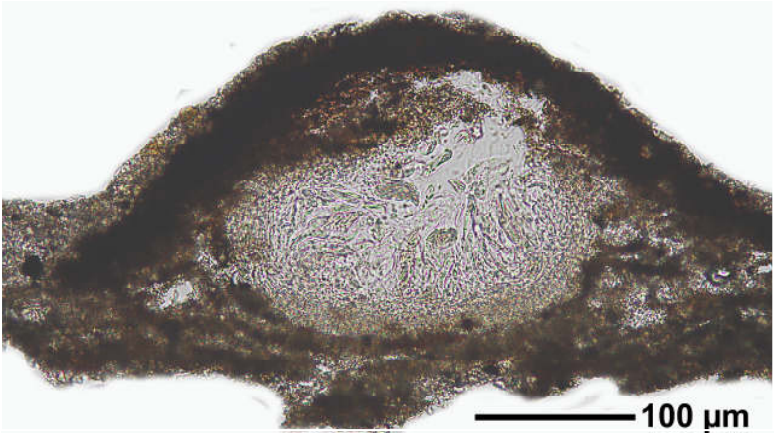


*Verrucaria muralis* Ach.

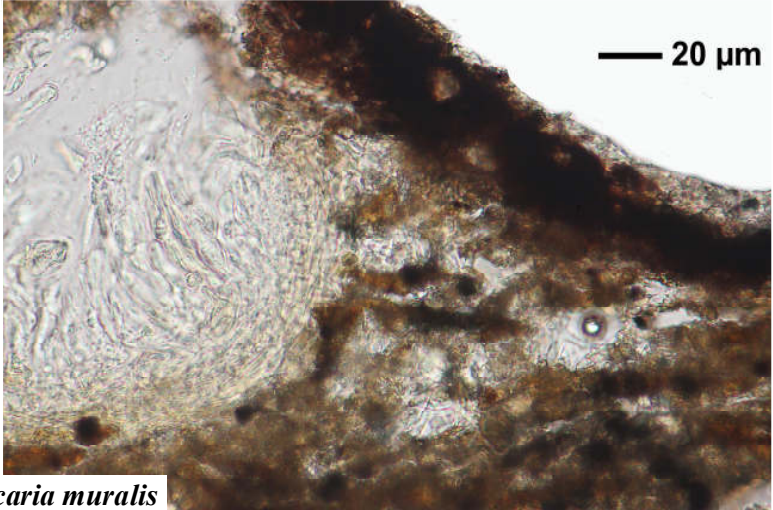
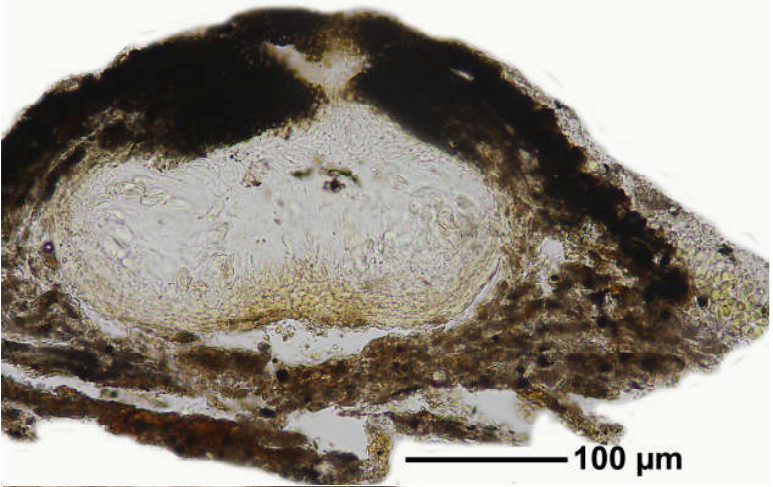
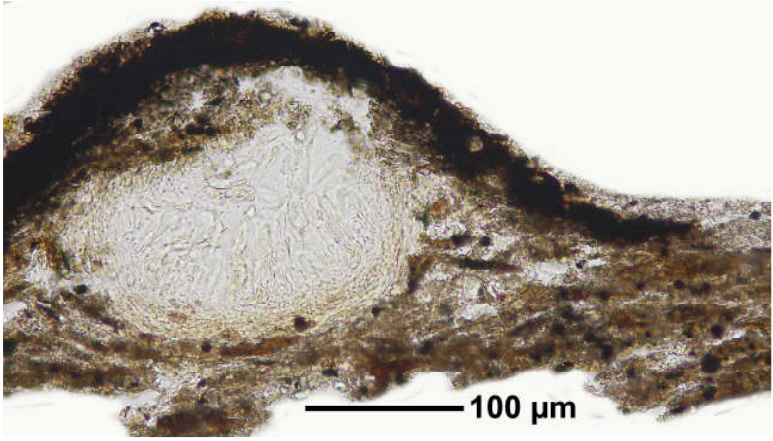
Thallus graugrün, glatt bis spaltig-rissig bis schwach areoliert, matt. Peritheccien halbeingesenkt, 0,35-045 mm, Involucrellum seitlich schief herablaufend. Paraphysen zerfließend. Periphysen 24-28  $\mu\text{m}$  lang. Asci 52 x 20  $\mu\text{m}$  Sporen hyalin 8/Ascus, 1-zellig, 16-20 x 7-11  $\mu\text{m}$

[2215], Germany, Baden-Württemberg, Kreis Göppingen, in einem Schieferbruch zwischen Ohmden und Zell (Lias, Posidonienschiefer), N-Seite einer Böschung, sickerfeucht, photophob. Leg. Schumm 30.09.1973, det. Schumm 1973

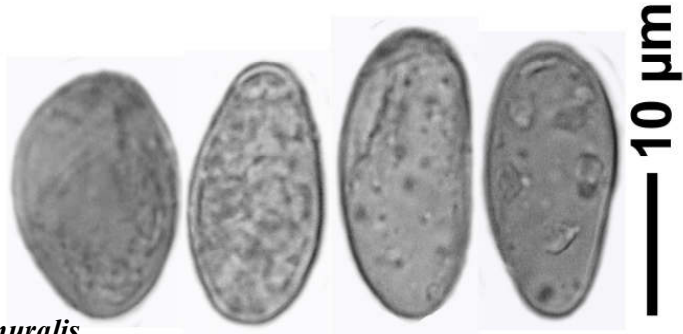
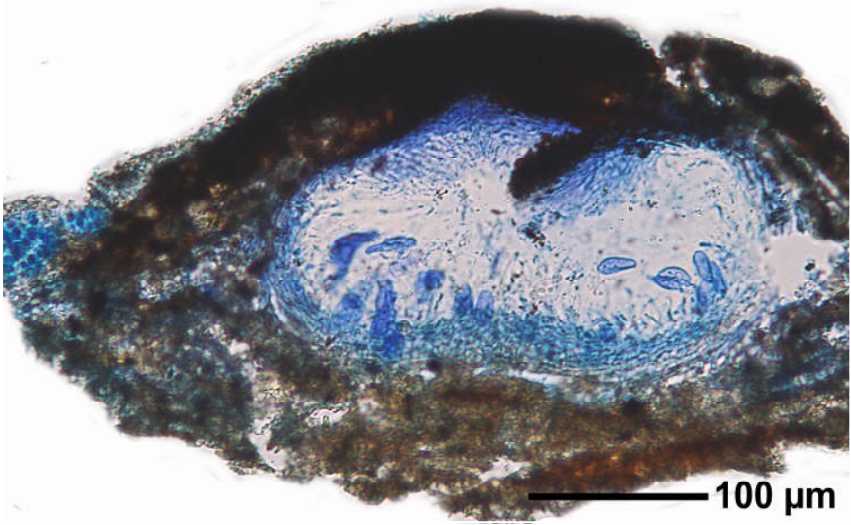
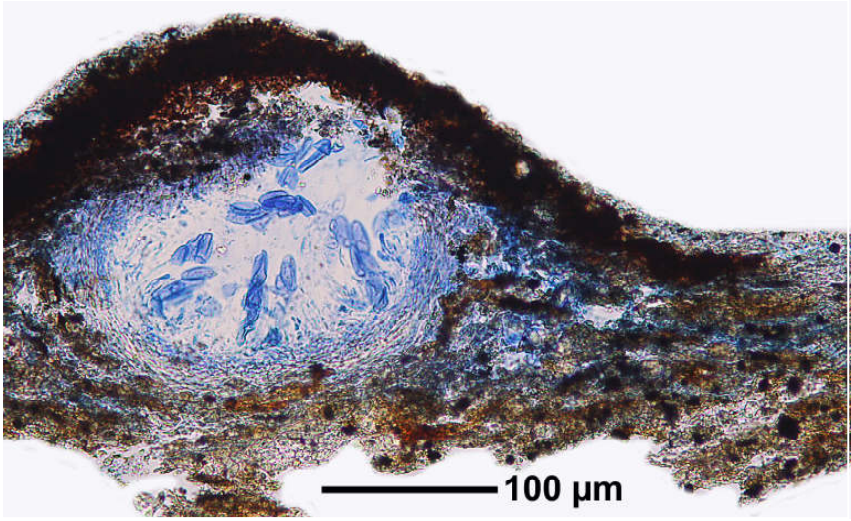




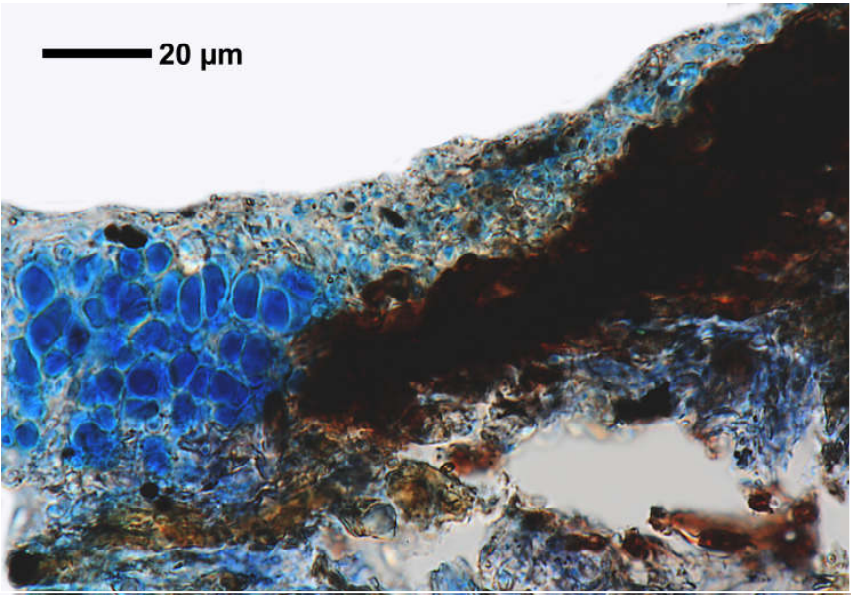
*Verrucaria muralis*



*Verrucaria muralis*



*Verrucaria muralis*



*Verrucaria muralis*