

*Xanthoparmelia semiviridis* (F. Muell. ex Nyl.) O. Blanco, A. Crespo,  
Elix, D. Hawksw. & Lumbsch  
[= *Chondropsis semiviridis* (F. Muell. ex Nyl.) Nyl.]

Lobes linear-elongate, 1-3 mm wide, curling inwards when dry. Upper surface pale yellow to pale yellow-green. Lower surface rugulose, rarely partly canaliculate. Chemistry: usnic acid, fumarprotocetraric acid, succinprotocetraric acid and  $\pm$ protocetraric acid; cortex K-, UV-; medulla K+ pale brown, C-, P+ orange-red.

[18957], Australia, New South Wales, 2 km north of Bredbo, 35°55' S, 149°09' E, 760 m, growing loose on soil in open pasture land. Leg. J.A. Elix (10883) & J. Johnston, 24.02.1983. LICHENES AUSTRALASICI EXSICCATI No. 026, distributed as *Chondropsis semiviridis* (Nyl.) Nyl.





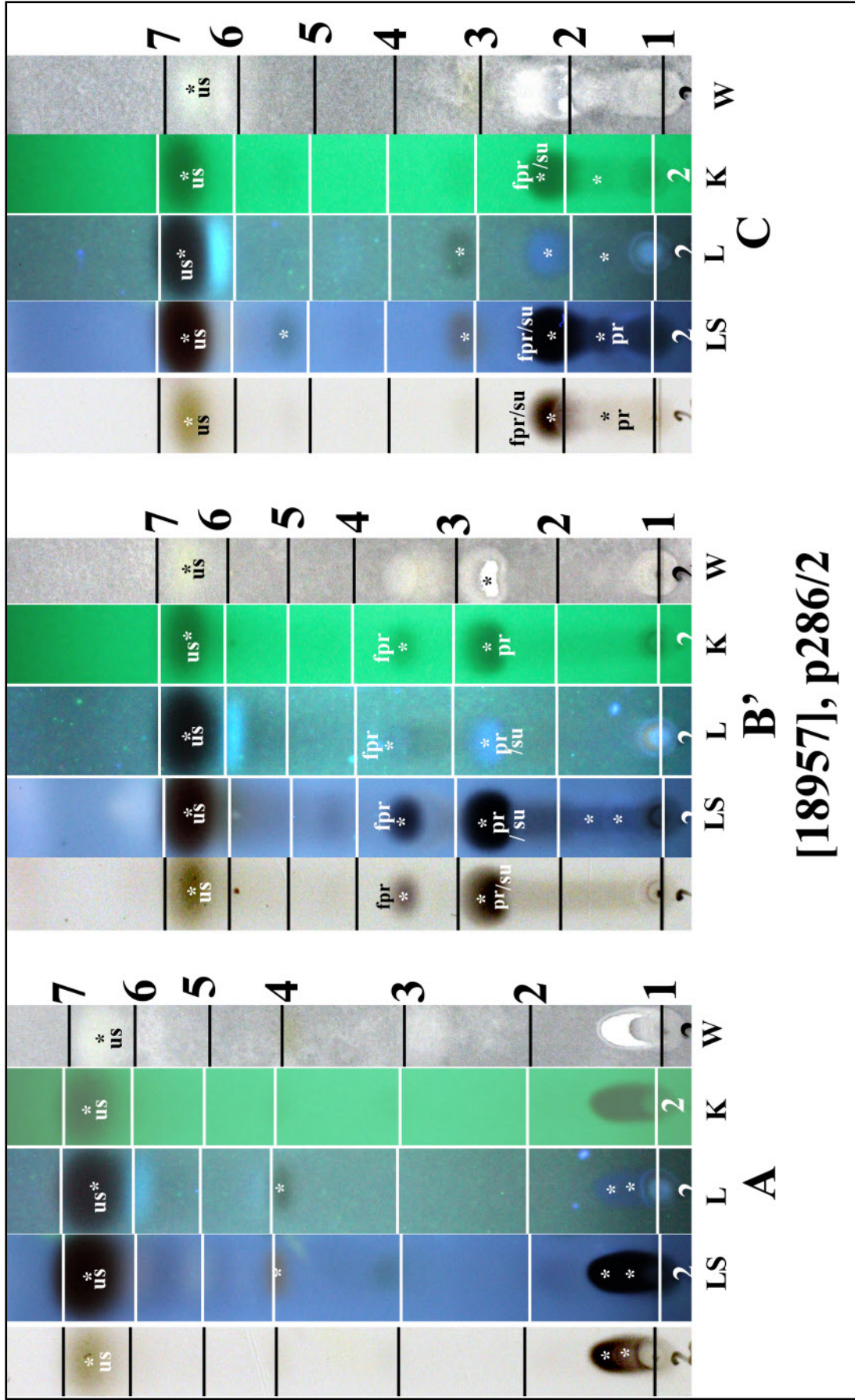


*Xanthoparmelia semiviridis*



*Xanthoparmelia semiviridis*

1035



us: usnic acid, pr: protocetraric acid, fpr: fumarprotocetraric acid, su: succinprotocetraric acid;  
 in B composite spot of pr & su; in C composite spot of fpr & su